

Climate Change in Chefnak, Alaska

our vision, challenges, how agencies can help

National Tribal Transportation Symposium

September 27, 2023

Janet Erik

President, Chefnak Traditional Council

Presidentchefnaktc@gmail.com



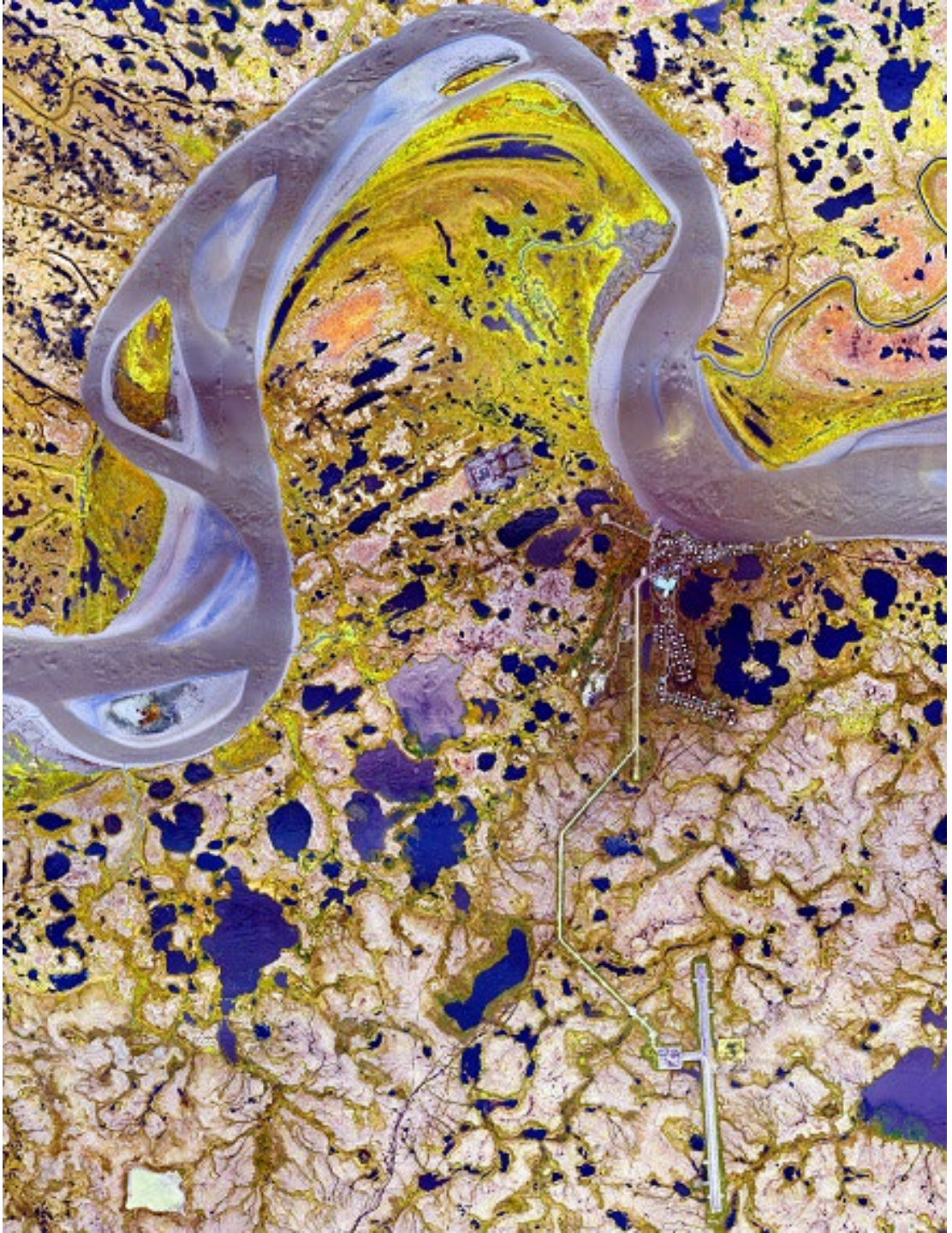
CHEFNAK TRADITIONAL COUNCIL

P.O. BOX 110 Chefnak, Alaska 99561

(907) 867-8850 or (907) 867-2062 Fax (907)867-8711

Vision

- Thriving people
- Thriving place
- Infrastructure that supports healthy people
- Lands and waters that provide abundant healthy food
- Equipment and resources to access subsistence food
- Preserve our language





















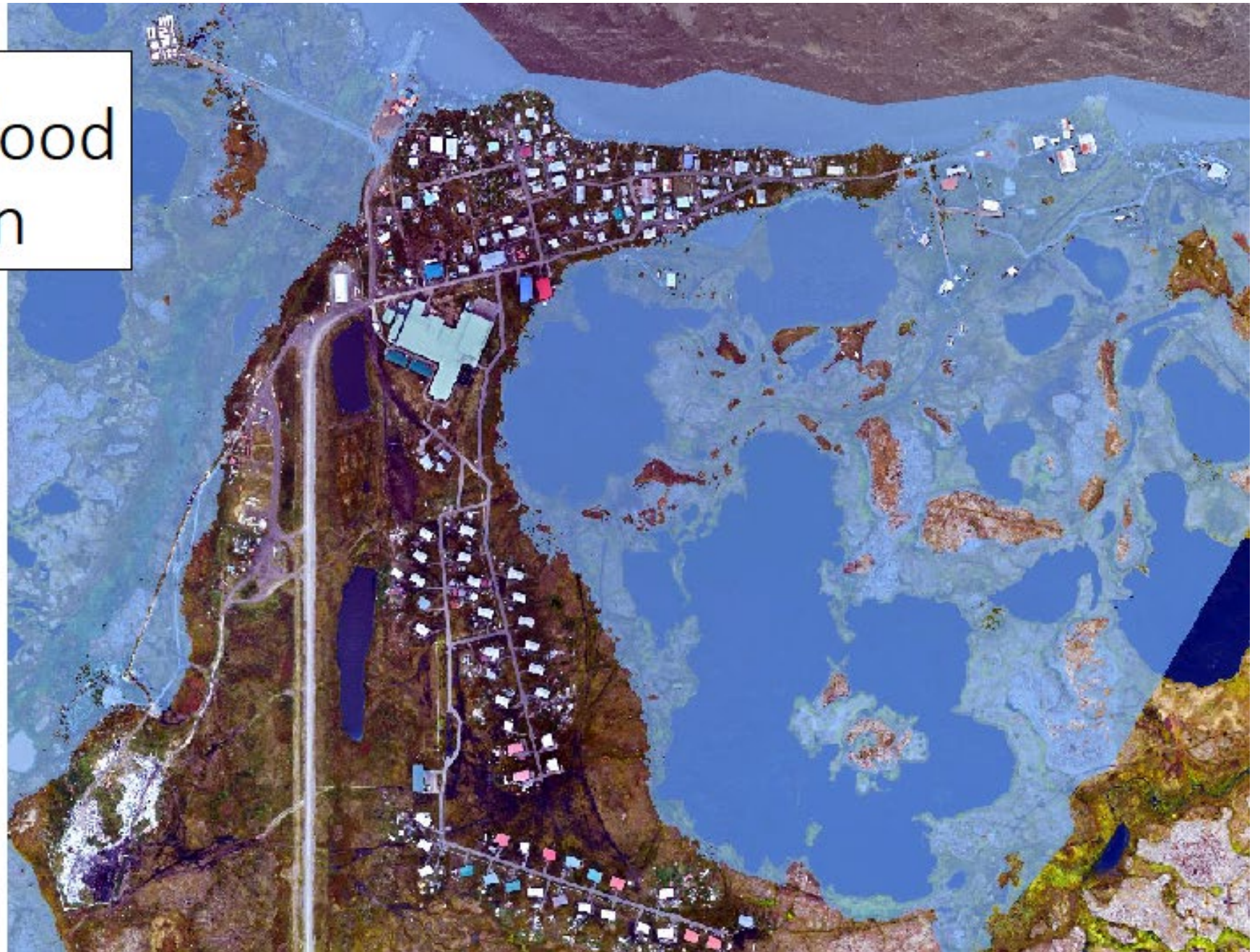




Chefornak Flood Simulation

Oct. 05, 2017 (3.7 m NAVD88)

(5.35 ft MHHW)









**SLOW
DOWN**
SPEED LIMIT
10 MPH







Chefornak Infrastructure Protection Organizational Chart

Decision-makers

Provides direction to working group and makes all major decisions.

Working Group

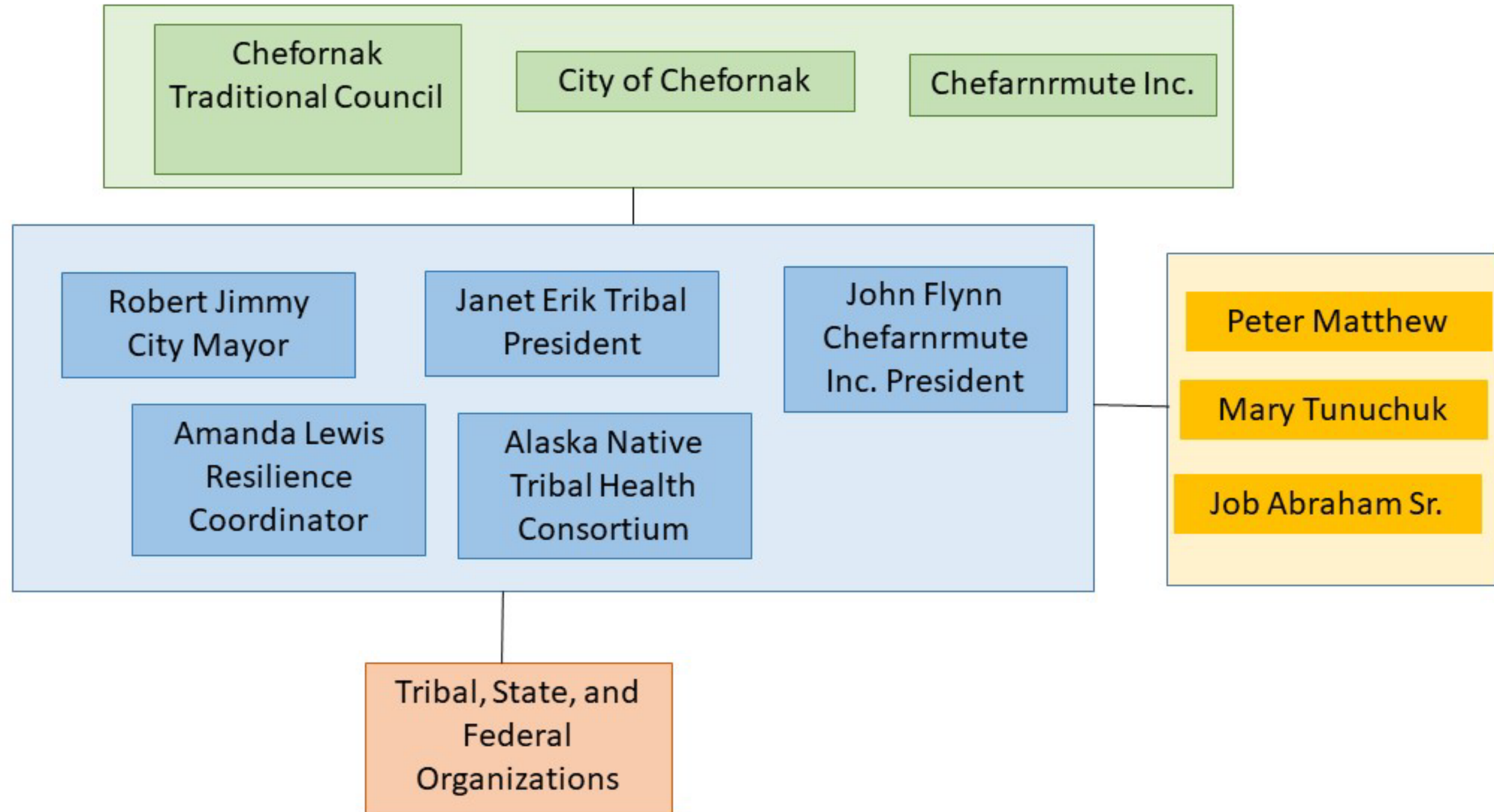
Completes strategic planning, develops and manages projects, and coordinates with technical support and funding agencies. Advances recommendations to decision-makers.

Elder Guidance

Supports the Working Group with guidance when needed

Supporting Organizations

Partner organizations provide technical support and funding.



Current Status

Completed

- Barge landing repair and concept design
- Geotechnical investigation and thermal monitoring
- Permafrost assessment phase 1
- Subdivision layout, design, platting
- Head Start design
- Retreat planning

Active

- Hazard Mitigation Plan
- Local staff position
- Home design and construction
- Historical flood assessment

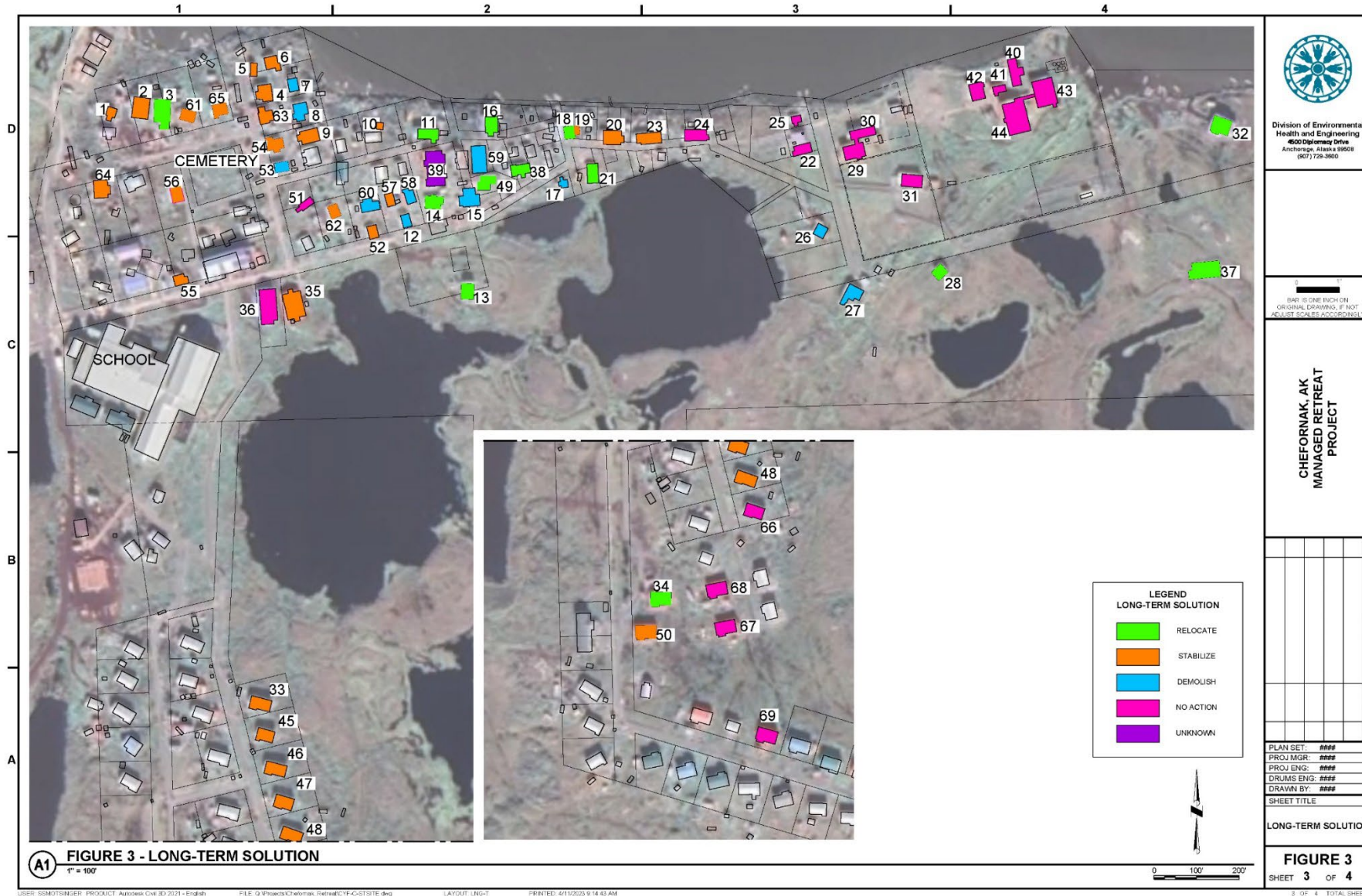
Pending

- Home foundation stabilization
- Barge landing design
- Continue local staff position
- Relocate homes
- Tank farm design
- Permafrost assessment phase 2
- \$3M for subdivision design and construction

Future

- New home construction
- Stabilize foundations
- Head Start school construction
- New tank farm
- *Another subdivision for housing*

Long-term solution for threatened homes



Managed Retreat Subdivision Layout

NOTES:

1. HOME SIZE AND LOCATION IS APPROXIMATE AND SHOWN FOR INFORMATION ONLY.
2. TOTAL HOME COUNT = 22
3. ELECTRIC LINES SHOWN ARE FOR INFORMATION ONLY AND TO BE DESIGNED BY OTHERS. ACTUAL LOCATIONS MAY VARY.
4. SEE PLAT FOR LOT, RIGHT-OF-WAY, AND EASEMENT INFORMATION.



Managed Retreat Subdivision



New Head Start Building Design



New barge landing design



Challenges

- Lack of funding
 - Piecemealing small grants is not effective
- We must navigate government programs instead of agencies coming to us to ask how they can help
- Large scale response requires outside support

How Agencies Can Help

1. Trauma due to current and future climate change
2. Need a single funding source based on community-specific risk
3. Need agencies to remove barriers to equity
4. Agencies could coordinate climate change support through a single point of contact



Safe and Healthy
Community

