

Harmonizing Oklahoma's Transportation Network: A Mobility Management Approach



OKLAHOMA



Enjoli Dixon
Project Associate
FTA Nat. Ctr for Mobility
Management/Regional Liaison,
FTA Region 4 and Region 7d



Olivia Hook
Mobility Management Director
Oklahoma Department of
Transportation





Presentation Outline

Four key learning objectives:

- **What the Oklahoma mobility management program is-coordinates with multiple transit providers tribal and non-tribal transit providers**
- **How mobility management programs bring the entire transportation network together including partnerships with non-transportation agencies**
- **How to utilize an existing mobility management program and if one is not available in your area, how to start the process of applying for a new mobility manager and funding available to support position.**
- **How CCAM (Coordinating Council on Access and Mobility) community improvements or partnership conversations can be driven by mobility managers- so that you can step back and let them collaborate around the issue you brought up**

Community Mobility

Transit is complicated for individuals
(especially in rural areas)



Type of transportation needed to fit the individual needs

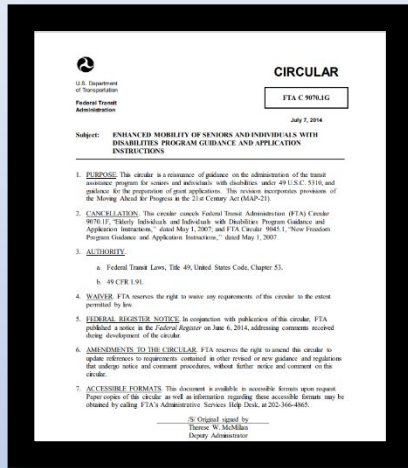
Other variables:

- Wheelchair, walking device
- Service animal
- Children/car seats
- And more

Extra impacts to finding transportation:

- Cost
- Time/Scheduling
- Longer travel times in public transit
- Lack of flexibility in scheduling return trips

Defining Mobility Management



Page I-4, section 4. t

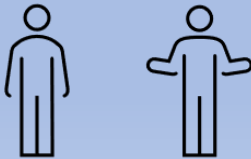
Mobility Management: Consists of short-range planning and management activities and projects for improving coordination among public transportation and other transportation service providers

Page III-11, section 14. f

Mobility management techniques may enhance transportation access for populations beyond those served by one agency or organization within a community

Mobility management is intended to build coordination among existing public transportation providers and other transportation service providers with the result of expanding the availability of service.

Mobility Management is essentially a social worker in the transportation industry



A Tribal Perspective on Mobility Management

- **Do we have someone who can speak on this or I think this should be a time to pause and go to the audience.**

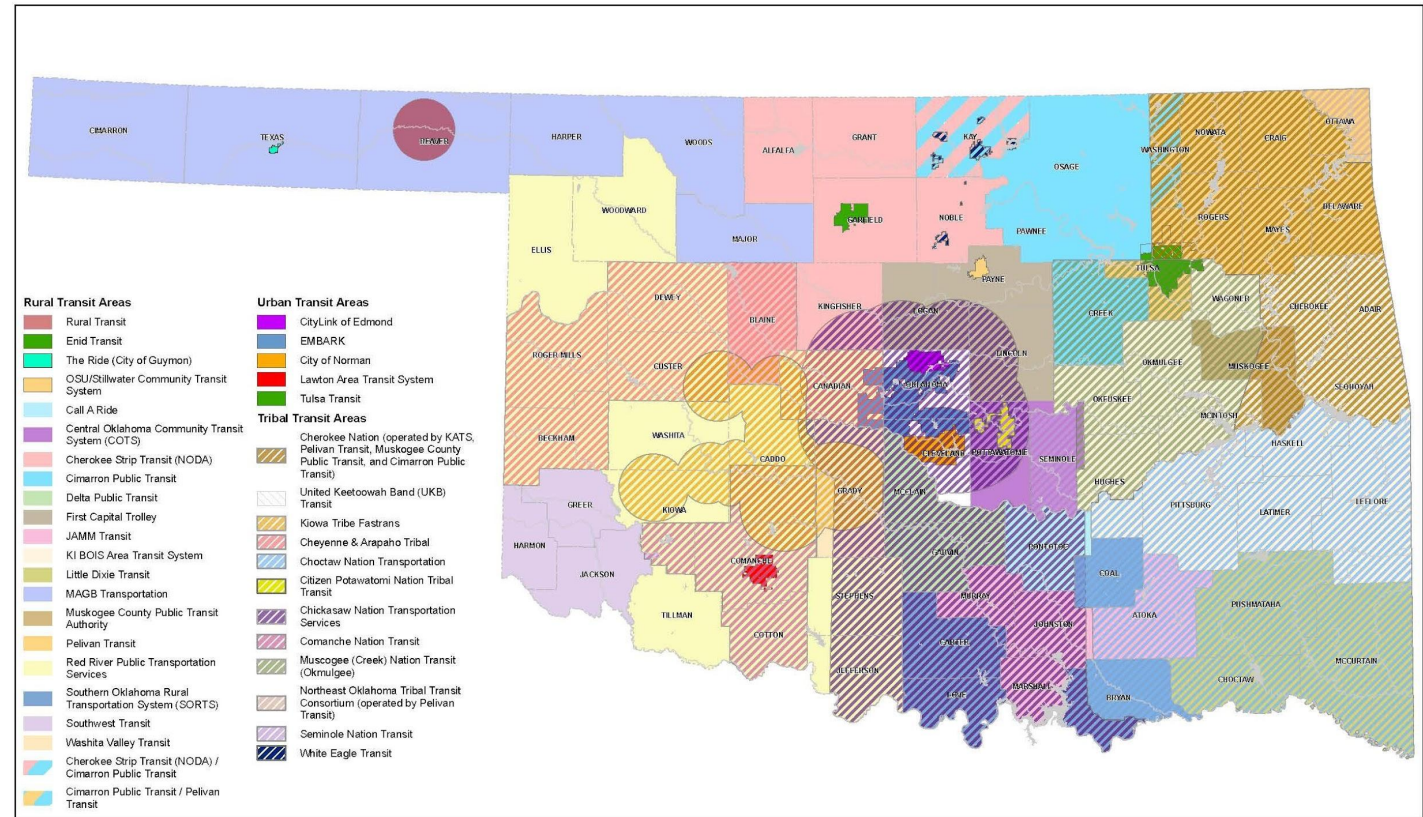
Transportation Services

Oklahoma has:

- **Urban & Rural Public Transit**
 - On-demand transportation in some areas
- **Tribal Transit**
- **Specialized transportation provider programs** for seniors and individuals with disabilities
- **Intercity Bus Providers** (Greyhound/Jefferson)
- **Commuter Rail-** Heartland Flyer to/from Ft. Worth, TX



Did you know that many tribal transit providers are open to the public? Contact your local tribal transit provider to find out if they do.



Transit Service Designated Coverage Areas



Traditional transit



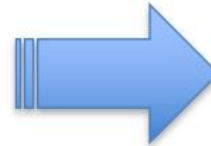
Traditional transit can handle the mobility needs of all --- that is, if every community as the same needs and access services exactly the same in every part of the country.

Time has shown us that this doesn't work. Every community is different. The demographic, resources in the community and number of transit services vary from one area to the next.

Mobility managers work with individuals, transportation providers and everyone impacted by the transportation services to advise the design that is based on the community's mobility need- not a cookie cutter model out of the box.



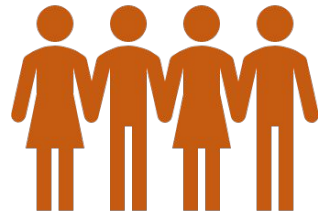
Federal Transit Administration (FTA):
MM focuses on meeting individual customer needs through a wide range of transportation options and service providers.



How mobility management programs bring the entire transportation network together including partnerships with non-transportation agencies

Strategic Approach

Inform & Connect



Connecting individuals to the transportation options that are most responsive to their needs

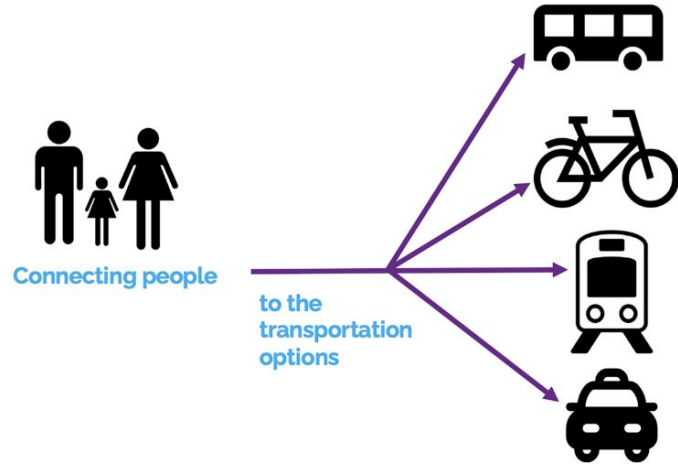
Collaboration & Coordination



Identify unmet transportation needs and help to close those gaps by facilitating interorganizational agreements & improvement strategies

Oklahoma Mobility Management

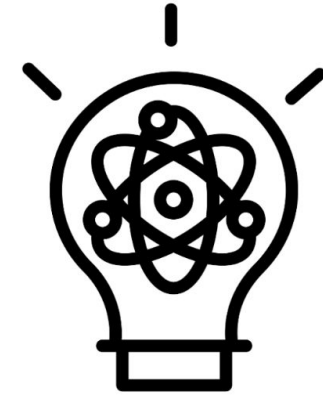
What is Mobility Management? Part 1



What is Mobility Management? Part 2



to understand people's transportation needs



and together create the new services that respond to those needs

that can best get them to their destinations

Provides better transportation resources & a local transportation specialist to contact

WHO MOVES PEOPLE?
Public Transportation in Southwest Oklahoma

Transit	Service Area	Call
Red River Public Transportation Services	Beckham, Cotton, Jefferson, Nowata, Roger Mills, Tillman, and Washita counties	Main number: 580-335-5588 Frederick office: 580-335-7544 Hobart office: 580-335-2691 Sayer office: 580-303-0676 Ryan office: 580-928-2164
Southwest Transit	Creek, Harmon, Jackson counties	580-482-5043
The Cheyenne and Arapaho Tribal Transit (CATT)	Canadian, Blaine, Custer, Dewey, Roger Mills, Beckham, and Washita counties	1-833-547-2364
Comanche Nation Transit	Sections of Caddo, Comanche, and Grady counties	580-492-3389
Kiowa FasTrans	Sections of Kiowa, Caddo, and Comanche counties	580-654-2053
Delta Public Transit	McCain county	1-866-848-8287 1-866-(THU)848
Washita Valley Transit	Grady county	405-222-3438
LATS (LAWTON AREA TRANSIT SYSTEM)	City of Lawton/Port Sill area only	580-248-5252

IS SCHEDULING MEDICAL TRIPS OVERWHELMING?
USE THESE TIPS TO GET THE MOST OUT OF SOONERRIDE

modivcare.com
• Book/Change a trip online • Forms • Check status
Website has learning videos that can teach people to use the modivcare app. <https://www.modivcare.com/naaa>

877-404-4500
TDD 800-722-0353
SoonerRide Reservations
SoonerRide Website: <https://oklahoma.gov/ohca/individuals/soonerride.html>

800-987-7767
• Assistance with finding doctors near you
• Agents can call the doctor to see availability
• Get help locating PCPs accepting Medicaid

Where's My Ride 800-435-1034 TDD 711
• Find out where your ride is
• Can call even if the ride gets cancelled OR is late—generates a paper trail for dispute

LET US KNOW **STILL HAVING DIFFICULTIES OR HAVE BEEN DENIED TRANSPORTATION??**
WE DON'T PROVIDE TRANSPORTATION BUT WE CAN HELP TRY TO FIND A SOLUTION

Cristi Williams | Southwest Mobility Navigator
Office: 580-982-5038
Cell: 580-480-9035

To Find a Mobility Navigator Near You
<http://okmm.mtiscreeensite.com>

OKLAHOMA MOBILITY MANAGEMENT PROGRAM
Mobility management is a transportation strategy that focuses on meeting community needs through the coordinated use of a variety of transportation providers including public transit, private operators, cycling and walking, volunteer drivers, and others.

Lawton Area Transit System	Comanche Nation Transit	Red River Transportation
(580) 248-5252 Monday-Friday 8am-7pm Saturday 9am-6pm Ages 18+ — \$1.00 Ages 6-17 — \$1.50 Medicare, seniors (65+), and individuals w/ disabilities — \$0.75 FREE service for: -Active duty military & Veterans -LPS students & staff -City of Lawton employees	(580) 492-3389 Monday-Friday 8am-7pm 0-5 years — Free 6-17 years — \$2.00 12-49 years — \$4.00 Seniors 62+ — \$2.00 Comanche Nation employee — \$3.00 Students — \$3.00 Service Areas: Lawton, Cache, Geronimo, Elgin, Fletcher, Medicine Park, Apache, Andarko, Chickasha, Ft Cobb, Carnegie	(866) 511-0938 Monday-Friday 8am-7pm General Public 1-10 mi — \$8.00 11-30 mi — \$15.00 31-50 mi — \$20.00 51-100 mi — \$45.00 101-150 mi — \$60.00 151-249 mi — \$80.00 250+ mi — \$90.40/mi Senior & ADA discounts available Transportation Offices: Sayer, Condit, Frederick, Hobart, Ringling, Ryan, Temple/Walters, Waurika, Weatherford, Woodward

Still need help? A mobility manager can help with:
• Additional transportation solutions
• Various community resources
• Advocating for public transit improvements
• Travel training

CONTACT YOUR LOCAL MOBILITY MANAGER
Katie Pollard | (580) 450-1930 | kpollard@delatats.com

NEED TRANSPORTATION FOR THE FREE DENTAL EVENT??
RED RIVER TRANSPORTATION will provide discounted transportation to this event on Saturday, February 10, 2024.
*Driver will stay at the event until last traveler has received dental services. (Please be prepared to wait. Driver must be aware if traveler does not plan to take return trip)

FREDERICK LOCATION
TRANSPORTATION TO OKMM FREE DENTAL EVENT
PICK UP FROM FREDERICK CALL: 580-335-2691
\$45.00 PER PERSON
THIS COST INCLUDES TRIP TO/FROM AND WAIT TIME
*TRANSPORTATION WILL RETURN WHEN LAST TRAVELER HAS RECEIVED DENTAL SERVICES

HOBART LOCATION
TRANSPORTATION TO OKMM FREE DENTAL EVENT
PICK UP FROM HOBART CALL: 580-928-2199
\$60 PER PERSON
THIS COST INCLUDES TRIP TO/FROM AND WAIT TIME
*TRANSPORTATION WILL RETURN WHEN LAST TRAVELER HAS RECEIVED DENTAL SERVICES

PACE IS LIMITED SO CALL NOW
All rides MUST be scheduled through Red River Transportation by Thursday February 8, 2024.

Learn more about OKMM
OKMM LAWTON
2 24
GREAT PLACES TO LIVE



Cristi Williams, SW Mobility Navigator

- Southwest Transit
- Red River Transit
- Comanche Nation Transit
- Chickasaw Nation Transportation
- Kiowa Fastrans
- Cheyenne-Arapaho Tribal Transit
- Delta Public Transit
- Washita Valley Transit
- Various 5310 Providers

Northwest Oklahoma Transportation Resources

Below are the transportation resources in the Northwest area of Oklahoma. Counties include: Alfalfa, Blaine, Garfield, Grant, Kay, Kingfisher, Major, Noble, Woods, Woodward, Dewey, Ellis, Harper, Beaver, Texas, Cimarron

MAGB Transportation, Inc.

Counties served: All of Northwest Oklahoma
Need a Ride?
Call: 580-227-3374
Hours of Operation: M-F 9am to 4pm
Schedule your ride 1-3 business days in advance (required for a high chance of guaranteed service)



BEAVER CITY TRANSIT

Counties served: City of Beaver
Need a Ride?
Call: 580-625-4835
Hours of Operation: M-F 9am to 4pm
Schedule your ride 1-3 business days in advance (required for a high chance of guaranteed service)



Cheerilee Strip Transit

Counties served: Alfalfa, Blaine, Garfield, Grant, Kay, Kingfisher, Major, Noble
Need a Ride?
Call: 580-863-2279
Hours of Operation: M-F 9am to 4pm
Schedule your ride 1-3 business days in advance (required for a high chance of guaranteed service)



Cimarron Public Transit

Counties served: Creek, Kay, Osage, Pawnee, Washington
PICK: Bartlesville, Ponca, Sapulpa, Skiatook, Cleveland
Need a Ride?
Call: 580-718-0444
Hours of Operation: M-F 9am to 4pm
PICK- After Hours transit
Call for specifics
Schedule your ride 1-3 business days in advance (required for a high chance of guaranteed service)

WhiteEagle Transit

Counties served: Kay, Noble, and some of Osage
Need a Ride?
Call: 580-763-0139
Hours of Operation: M-F 9am to 4pm
Tribal transit - open to the public
Schedule your ride 1-3 business days in advance (required for a high chance of guaranteed service)



CITY ENID

Counties served: City of Enid
Need a Ride?
Call: 580-616-7356
Hours of Operation: M-F 9am to 4pm
Schedule your ride 1-3 business days in advance (required for a high chance of guaranteed service)



"The Ride" in Guymon, OK

Counties served: City of Guymon
Need a Ride?
Call: 580-338-7433
Hours of Operation: M-F 9am to 4pm
Schedule your ride 1-3 business days in advance (required for a high chance of guaranteed service)



Oklahoma Mobility Management

Counties served: All of Northwest Oklahoma
Need a Ride?
Call: 580-599-0951
Hours of Operation: M-F 9am to 4pm
Need help understanding Transportation options? Call your Mobility Manager for help

Currently serving Atoka, Bryan, Coal, and Johnston Counties



WHAT DOES A MOBILITY MANAGER DO FOR YOU? TRANSPORTATION PROFESSIONAL

I can help you find a ride that fits your individual needs. If the solution doesn't currently exist, I can work to fix that.

Provide person-centered travel training and trip planning:

- A Mobility Manager can meet with you to plan each part of your trip.
- Ride with you on local trips until you feel comfortable scheduling your ride, transferring buses, and riding the bus independently.

RESOURCE PROFESSIONAL

Create relationships with community service providers.

Coordinate with our community partners on mobility projects

I can make referrals to services like:

- Healthcare
- Nutrition
- Human Services

Develop relationships across county lines.

- Maybe there is a service you need that could be covered by the neighboring area.

- I coordinate solutions with existing services in and around the area I serve.

WHO MOVES PEOPLE?

SOUTHERN OK RURAL TRANSIT	BRYAN COUNTY COAL COUNTY	580-924-1177 580-927-2381
JAMM TRANSIT	ATOKA COUNTY JOHNSTON COUNTY	580-889-5193 580-271-2352
CHICKASAW NATION TRIBAL TRANSIT	BRYAN AND JOHNSTON COUNTIES	800-492-2115
CHOCTAW NATION TRIBAL TRANSIT	ATOKA BRYAN AND COAL COUNTIES	580-775-4293
MedRide	STATEWIDE	877-668-8267
SOONERIDE	STATEWIDE	877-404-4500
VETERANS RIDE CONNECT	STATEWIDE	855-735-4862

Transportation services that start and end with the customer

WHAT WOULD YOU Do?

Life can have its unexpected ups and downs. What would you do if you find yourself without transportation?



Car breaks down



Going to appointments or running errands without family to help



Need a job, but don't have a vehicle

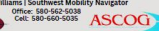


Wheelchair bound

TRANSPORTATION DIFFICULTIES??

WE DON'T PROVIDE TRANSPORTATION BUT WE CAN HELP TRY TO FIND A SOLUTION

Cristi Williams | Southwest Mobility Navigator
Office: 580-660-5038
Cell: 580-660-5035



To Find a Mobility Navigator Near You
<http://okmm.multiscreensite.com>

Some new information:

OKLAHOMA MOBILITY MANAGEMENT

Altus Area Transportation Resources



Why Use a Mobility Navigator?

A mobility navigator serves as a guide and advocate, working to ensure that individuals with transportation challenges can access services that support their daily living needs and increase their quality of life. The Mobility Navigator's goal is to identify resources and educate citizens and community members on processes and programs that increase access to transportation.

ACCESS TO ESSENTIAL SERVICES:

Essential services such as healthcare, education, and employment opportunities might be spread out. Finding transportation solutions ensures that residents can access these vital services more easily.

SOCIAL CONNECTIVITY AND QUALITY OF LIFE:

Mobility isn't just about physical transportation; it's about connecting people. It plays a significant role in social connectivity by enabling individuals to access community centers, social events, and engage in communal activities.

TRANSPORTATION DIFFICULTIES??

WE DON'T PROVIDE TRANSPORTATION
BUT WE CAN HELP TRY TO FIND A SOLUTION



Cristi Williams | Southwest Mobility Navigator



Office: 580-562-5038
Cell: 580-660-5035



Public Transportation

Southwest Transit: 580-482-5043 (Altus)

Intown rates: \$2.50 within 2 mile radius of city limits of Altus
Weekday 8:00am to 4:30pm (Mon-Fri)

Altus Express Shuttle: 580-471-0402

Weekend 6:00pm to 2:10am (Fri-Sat)

AmeriCorps RSVP: 580-482-4141

"Limited to medically-related appointments, grocery shopping and social events. Cannot accept requests for rides if qualified for Motivcare."



Veteran Transportation

Disabled American Veterans - DAV: 580-585-5682

Transportation to Lawton Main and Lawton North (Mondays and Tuesdays)



Medicaid Transportation Reservations

SoonerRide/Modivcare Reservations: 877-404-4500

Online: modivcare.com

**Medical (non-emergency) transportation services

SOONER SELECT PLANS:

**Various transportation options available. Refer to your plan to see options.

Aetna

Reservations: 877-718-4208

Humana

Reservations: 877-718-4213

Oklahoma Complete Health

Reservations: 877-718-4212



To Find a
Mobility Navigator
Near You

<http://okmm.multiscreensite.com>

A few things we've been up to in June 2024:



Empowering Independence: Mobility Management participates in 2024 Oklahoma Youth Leadership Forum- Game of YLife



In June 2024, the Mobility Management Program took part in the summer's Oklahoma Youth Leadership Forum's "Game of YLife" event at the University of Science and Arts of Oklahoma campus in Chickasha, OK. This event was designed to help individuals with developmental disabilities learn more about managing daily life and finances. Students were given a fixed amount of game money to allocate across housing, medical, employment, education, leisure activities, and transportation.

The main goals were to help participants understand financial management, the importance of budgeting, and the role of transportation in daily life. The event allowed students to make financial decisions in a hands-on way, emphasizing how critical transportation is for independence.

As a result, participants gained valuable financial skills, understood the importance of transportation, and built stronger community connections. The event successfully showcased the Mobility Management Program's dedication to helping individuals with developmental disabilities achieve greater independence and mobility.



Learn more about Oklahoma Mobility Management by visiting
<https://okmm.multiscreensite.com>



Tribal transit driving competition and annual training Rodeo



Women Veterans Resource Event in OKC





2023-2027 Regional Transportation Goals that could benefit aging Oklahomans

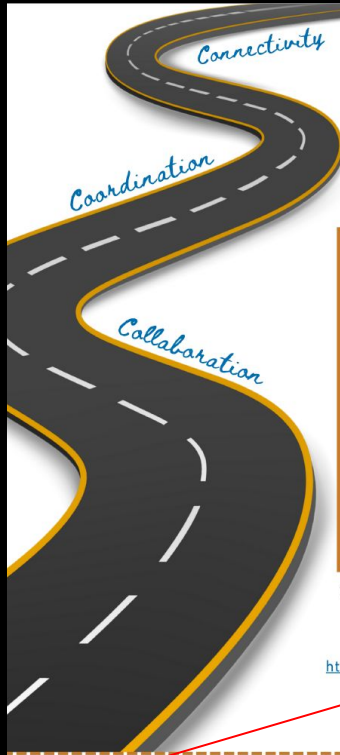
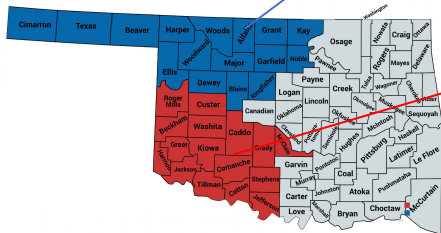
	NE	SE	Central	SW	NW
Goal 1	Improve awareness of and education on transit services in the Northeast Region for both the public and other agencies	Streamline transportation services provided for riders 60 years of age and older	More fully understand gaps in existing service areas	Improve recruiting and retention of qualified drivers and office staff	Improve recruiting and retention of qualified drivers and office staff
Goal 2	Expand services offered outside typical business hours (8AM – 5PM, Monday – Friday)	Improve service coordination between agencies	Increase use of technology to enhance service provision	Identify additional funding sources	Establish transit hubs to improve cross-boundary service coordination.
Goal 3	Improve service coordination between agencies	Eliminate eligibility barriers, such that more types of riders can use public transit services	Fully implement a Mobility Management program in the Central Region	Expand services offered outside typical business hours (8AM – 5PM, Monday – Friday)	Prepare for electric and alternative fuel vehicle implementation.
Goal 4		Increase use of technology to enhance service provision	Improve recruiting and retention of qualified drivers	Prepare for electric and alternative fuel vehicle implementation	Increase use of technology to enhance service provision.
Goal 5		Improve recruiting and retention of qualified drivers			

Get involved- Transportation Chat Forums

Currently in the Northwest and Southwest Regions.
More coming soon as mobility management programs get established!

Best place to get started in transportation discussions!!!

Contact your local mobility management professional for more information.



We would like to invite you to the

MONTHLY COMMUNITY TRANSPORTATION MEETING

When:
The second Wednesday of every month
From 5:30 pm to 6:30 pm

Where:
NODA Conference room 2901 N. Van Buren Enid, OK 73703

What:
A discussion on local transportation challenges and solutions, along with any related topics.
Your insights, experiences, and ideas are highly valued and encouraged. See you there!

There is also a Zoom link below that you may join if you cannot attend in person.
Copy the link below to join
<https://us02web.zoom.us/j/82858435382pwd=VlpvZ3VCdUJldHBtSDFobGloNlkwQT09>
Meeting ID: 828 5843 5382
Passcode: 414433

If you have any questions or need assistance to attend the meeting, please don't hesitate to reach out.

Chanler Cory
Northwest Mobility Manager
1-580-599-0951
Chanler@noda-ok.org

Brock Spencer
Director of Transportation Planning
1-580-798-0500
Brock@noda-ok.org

SWOK TRANSPORTATION CHAT

SOUTHWESTERN OKLAHOMA TRANSPORTATION CHAT GROUP

Where?
Historic Blanchard City Hall
114 West Broadway
Blanchard, OK

When?
May 6, 2024
10:00am - 11:00am

Talking with the community about transportation needs, concerns and strategies for improvement. This chat is important because it brings the community together to discuss and focus on transportation solutions that work for everyone. Thus, ensuring that the solutions are efficient and consider the needs of citizens, businesses, agencies, and transit agencies.

We Value Your Input!!



If you are unable to attend in person and would like to attend virtually, please email me at cristi@swoda.org to receive a virtual link or scan the QR code.



Cristi Williams | Southwest Mobility Navigator
Office: 580-562-5038
Cell: 580-660-5035

SWODA ASCOG

To Find a Mobility Navigator Near You
<http://okmm.multiscreensite.com>

How to start MM in your area?

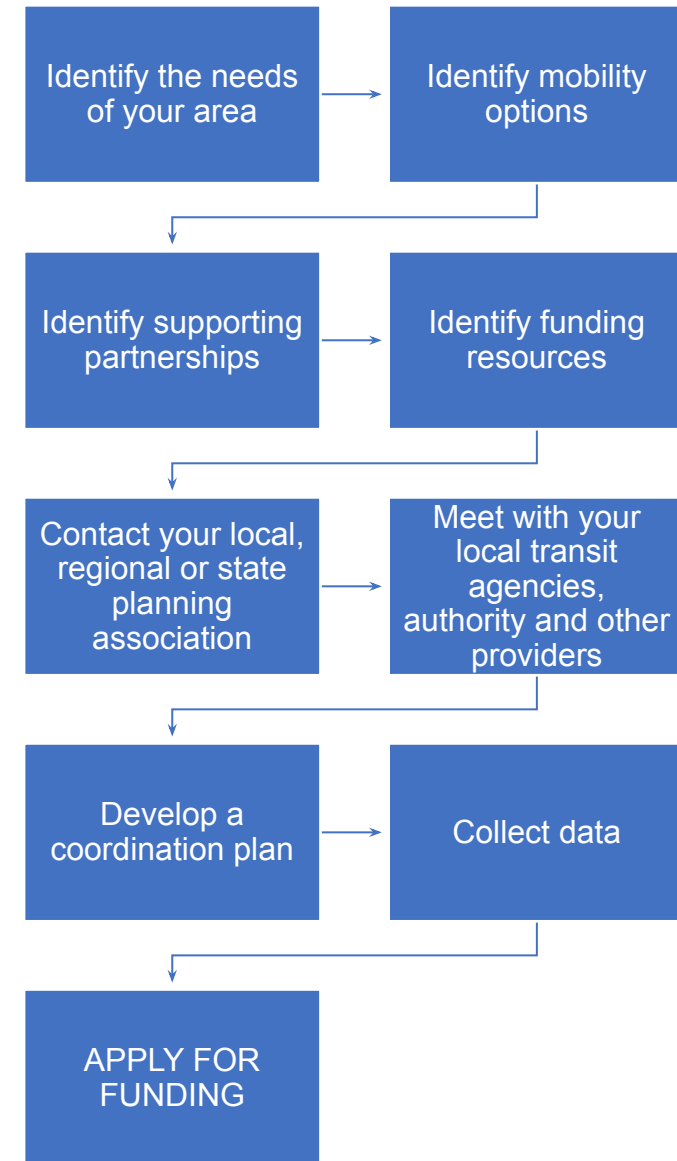
What is Mobility Management



Connecting people to the transportation options that can best get them to their destinations



- Medical
- Shopping
- Fun
- Housing
- Services



Mobility Management Programs are excited to share your tribal transit service information!



OKLAHOMA MOBILITY MANAGEMENT

Mobility management is a transportation strategy that focuses on meeting community needs through the coordinated use of a variety of transportation providers including public transit, private operators, cycling and walking, volunteer drivers, and others.

Lawton Area Transit System

(580) 248-5252

Monday-Friday 6am-7pm
Saturday 9am-6pm

Ages 6-17 -- \$1.00
Ages 18+ -- \$1.50

Medicare, seniors (65+), and individuals w/ disabilities --- \$0.75

FREE service for:

- Active duty military & Veterans
- LPS students & staff
- City of Lawton employees

Comanche Nation Transit

(580) 492-3389

Monday-Friday 5am-7pm

0-5 years --- Free
6-12 years --- \$2.00
12-61 years --- \$4.00
Seniors 62+ --- \$2.00

Comanche Nation employee--- \$3.00
Students --- \$3.00

Service Areas:

Lawton, Cache, Geronimo, Elgin, Fletcher, Medicine Park, Apache, Anadarko, Chickasha, Ft Cobb, Carnegie

Red River Transportation

(866) 511-0938

Monday-Friday 8am-7pm

General Public

1-10 mi ---- \$8.00
11-30 mi ---- \$15.00
31-50 mi ---- \$30.00
51-100 ---- \$45.00
101-150 ---- \$60.00
151-249 ---- \$80.00
250+ mi --- \$0.40/mi

Senior & ADA discounts available

Transportation Offices:

Sayre, Cordell, Frederick, Hobart, Ringling, Ryan, Temple/Walters, Waurika, Weatherford, Woodward

Still need help?

A mobility manager can help with:

- Additional transportation solutions
- Various community resources
- Advocating for public transit improvements
- Travel training





Oklahoma Mobility Management

CONTACT YOUR LOCAL MOBILITY MANAGER

Katie Pollard | (580) 450-1930 | kpollard@ridelats.com

WE'RE BACK

TRIBAL TRANSIT PROGRAM

FIXED ROUTE SERVICES

STARTING → MONDAY JULY 8, 2024

FOR MORE INFO:
☎ 1-800-247-4612, Ext. #32600
or (580) 331-2600

✉ transit@cheyenneandrapaho-nsn.gov

OPEN AND FREE TO THE PUBLIC!

BLUE ROUTE


*Servicing → Canton * Seiling * Watonga * Geary * Calumet*



Morning	
Canton ERC	8:30 AM
Seiling ERC	9:05 AM
Watonga IHS/PHS	9:50 AM
Geary ERC	10:15 AM
Calumet Jiffy Trip	10:40 AM
Concho Complex	11:05 AM
Afternoon	
Concho Complex	1:00 PM
Calumet Jiffy Trip	1:25 PM
Geary ERC	1:50 PM
Watonga IHS/PHS	2:15 PM
Seiling ERC	3:00 PM
Canton ERC	3:35 PM

YELLOW ROUTE

*Servicing → Clinton * Hammon * Elk City*

Morning	
Weatherford Transit	8:15 AM
Clinton IHS/PHS	8:40 AM
Clinton Domino	8:50 AM
Hammon Travel Center	9:30 AM
Elk City Homeland	9:50 AM
Clinton Domino	10:30 AM
Clinton IHS/PHS	10:40 AM
Weatherford Transit	11:05 AM
Afternoon	
Weatherford Transit	1:05 PM
Clinton IHS/PHS	1:30 PM
Clinton Domino	1:40 PM
Hammon Travel Center	2:20 PM
Elk City Homeland	2:40 PM
Clinton Domino	3:20 PM
Clinton IHS/PHS	3:30 PM
Weatherford Transit	3:55 PM



Example: Coordination - Choctaw Transit NEMT

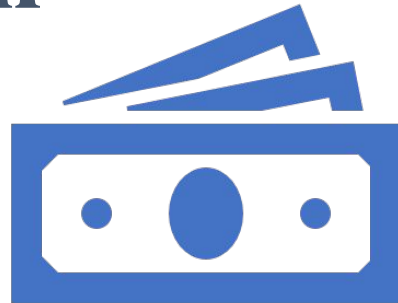


Transportation Services (Tribal Transit)

Offering patients transportation to non-emergency medical appointments at Choctaw Nation health clinics as well as specialized clinics outside of CNHSA.

•Source: Choctaw Transportation Services
<https://www.choctawnation.com/services/tribal-transit/>

Challenges with Coordination



Funding: blending, braiding and leveraging another program funds is complex



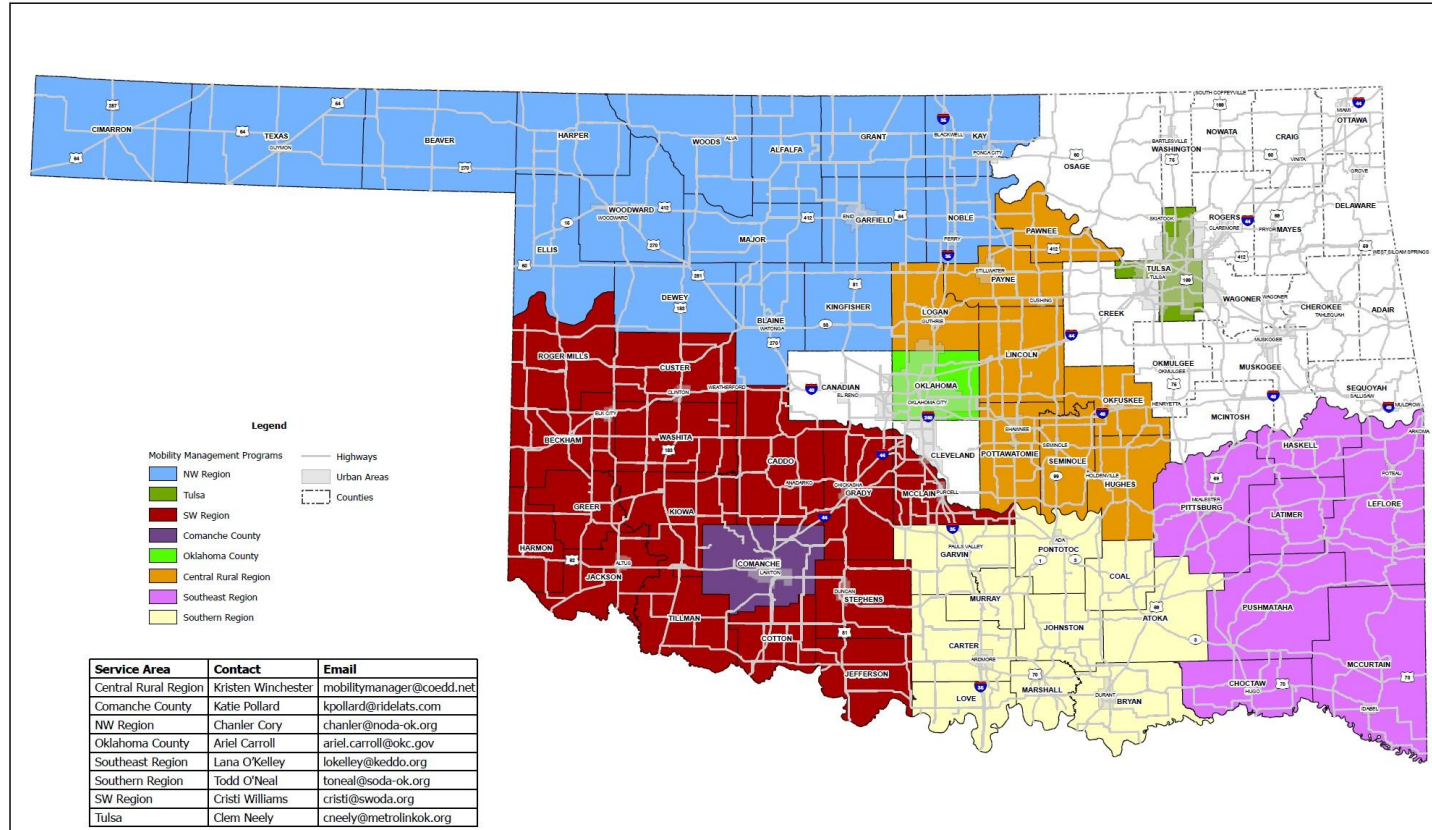
Lack of familiarity with the “other” program’s rules and operations



Transportation Systems are Complicated!

Oklahoma Mobility Management

- Started in 2023
- Currently, we have 8 programs covering regionally
- ODOT is adding more programs as funding is obtained to launch and sustain them.



Mobility Management Programs

Statewide Program Contact: Olivia Hook - Mobility Management Director, 405-625-2229, OHook@odot.org





CCAM Strategy



Mission

The CCAM issues policy recommendations and implements activities that improve the **availability**, **accessibility**, and **efficiency** of transportation for the following targeted populations:



Individuals with Disabilities



Older Adults



Individuals of Low Income

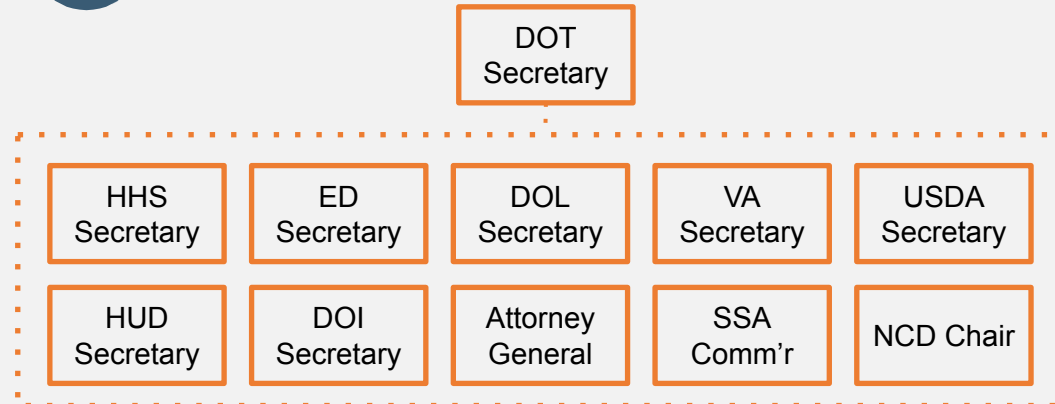


History

The CCAM is an interagency partnership **established in 2004 by Executive Order 13330** to coordinate the efforts of the Federal agencies that fund transportation for CCAM targeted populations.



Organization



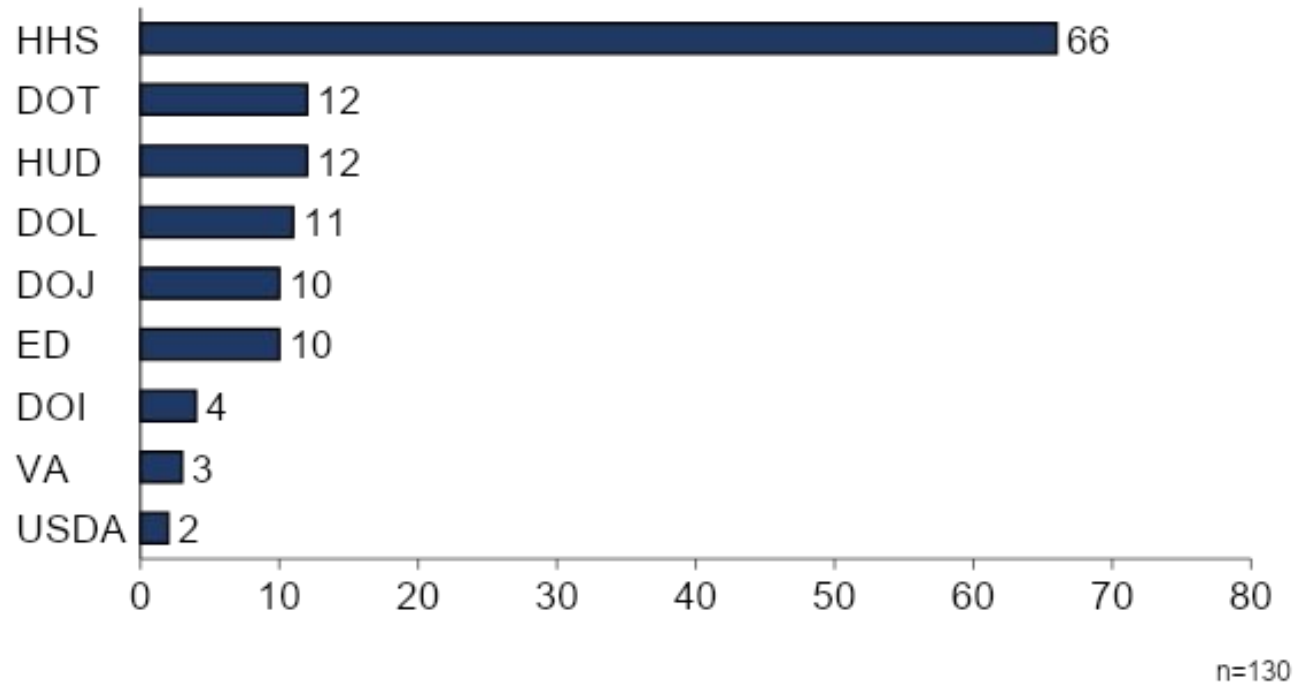


CCAM Program Inventory

The CCAM Program Inventory identifies 130 Federal programs that are able to provide funding for human service transportation for people with disabilities, older adults, and/or individuals of low income.

Initial CCAM Work

Number of Programs by Department that May Fund Human Services Transportation



Although SSA reported that no programs may fund human services transportation, coordination opportunities were explored. NCD does not fund grant programs.

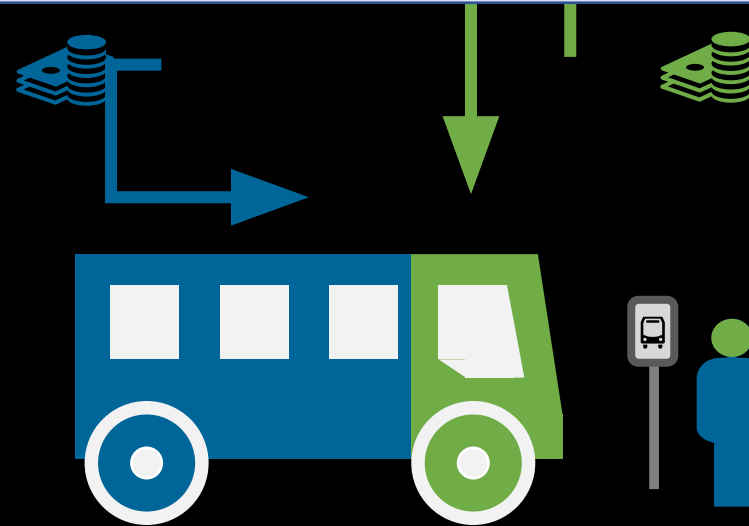


Federal Fund Braiding Guide

In 2018 and 2019, the CCAM held Federal working sessions to develop the Federal Fund Braiding Guide, a CCAM resource that clarifies acceptable Federal fund braiding for local match opportunities.

Initial CCAM Work

Federal fund braiding for local match is when Federal funds from one grant program are used to fulfill the local match requirement of another Federal grant.



In order to participate in Federal fund braiding, a project **must meet all requirements** of the participating Federal agencies, including eligibility requirements, reporting requirements, regulatory requirements, statutory requirements, and program guidance.

CCAM Departments in the Tribal Governments

•Cherokee Nation

•Website

<https://www.cherokee.org/our-government/>

Executive Branch

The Executive Branch implements Cherokee Nation laws, establishes tribal policy and is responsible for daily operation of tribal programs and enterprises.

Cherokee Nation Constitution

Drafted in 1999 and ratified in 2003 by popular vote, Cherokee Nation's Constitution provides the framework for our tripartite government and tribal laws.

Office of the Attorney General

The attorney general represents the Cherokee Nation in all cases in the courts where the Cherokee Nation is a named party.

Election Commission

The Election Commission carries out Cherokee Nation law for the purpose of conducting all Cherokee Nation Elections.

Autism Task Force

This group of health professionals actively reviews existing services and resources to enhance the tribe's autism initiatives.

Judicial Branch

The courts serve as the forums to hear and resolve disputes which arise under the laws and Constitution of the Cherokee Nation.

Delegate to Congress

Cherokee Nation's right to a delegate in the House of Representatives is affirmed by all three of the Nation's treaties.

Secretary of Natural Resources Office

Natural Resources are the bedrock for the overall health of our tribal citizens, our local wildlife and our native plant species.

Gaming Commission

Gaming Commission is responsible for implementing the provisions of the Indian Gaming Regulatory Act and the Cherokee Nation gaming ordinance.

Equality Task Force

This group of health professionals actively reviews existing services and resources to enhance the tribe's equality initiatives.

Legislative Branch

The Tribal Council of the Cherokee Nation is comprised of a representative body of 17 Cherokee Nation citizens, elected to serve staggered terms.

Office of Financial Resources

The Office of Financial Resources is lead by the Treasurer, who is responsible for administration of all Financial operations of the tribe.

Environmental Protection Commission

The Cherokee Nation Environmental Code establishes a five-person board called the Environmental Protection Commission (EPC) to oversee environmental programs.

Tax Commission

The purpose of the Cherokee Nation Tax Commission is to raise revenue that enables the government to provide needed services to Cherokee Nation citizens.

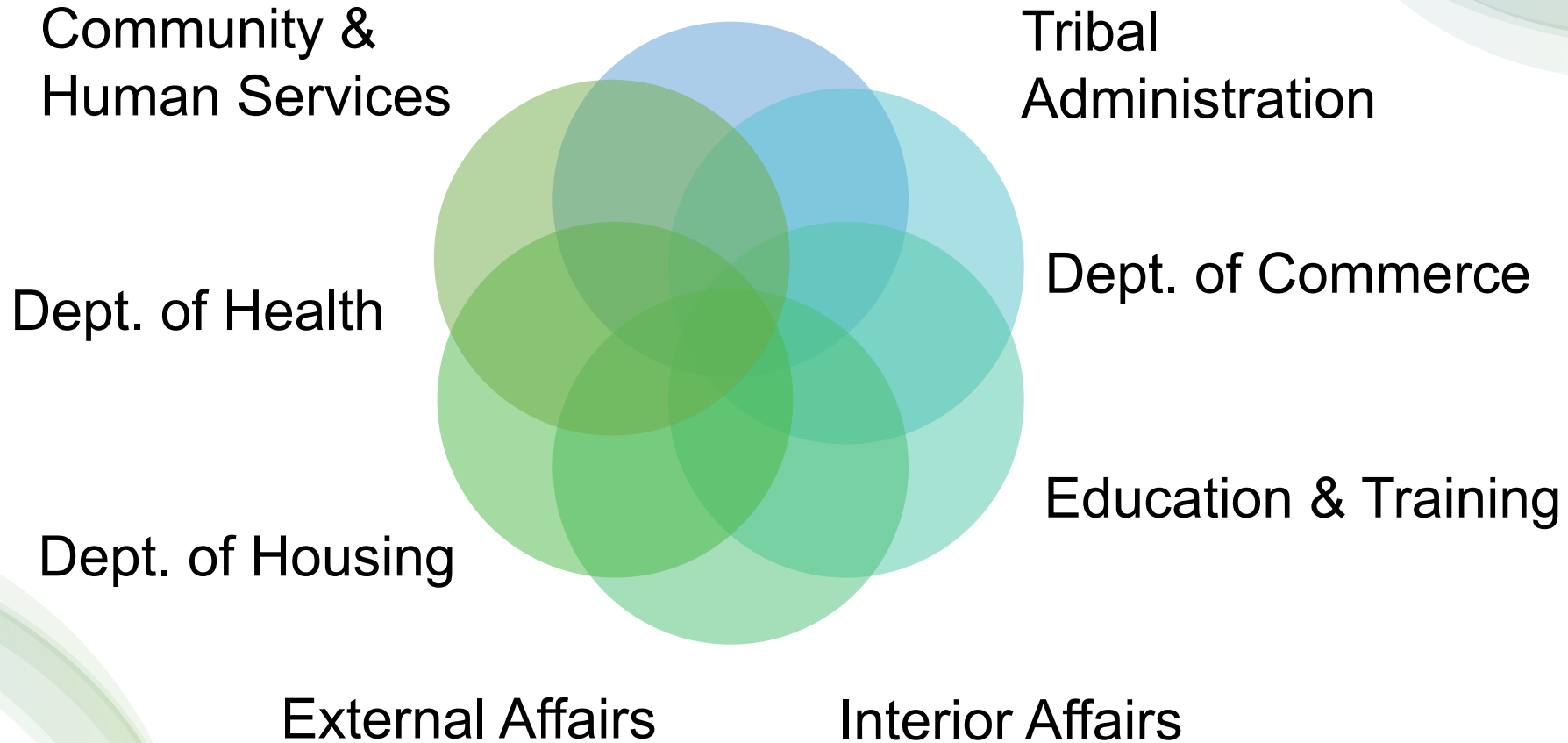
Cherokee Vote

Cherokee Vote began in 2013 to encourage citizen participation in tribal, city, county and federal elections.

Non-transportation agencies per CCAM

Example Muscogee Nation

Mobility Management



How CCAM HELP?

Example: CHICKSAW NATION and AMAZON PARTNERSHIP

Packed Promise program is an innovative supplemental benefit service and delivery model aimed at increased food access, food security and diet quality for Chickasaw children ages 4-18, Pre-K through 12th grades who qualify for free and/or reduced-priced school meals.

Packed Promise is a home delivery food service. Families approved for the program will gain the ability to shop online through Amazon Business every month. Families will receive an allowance of \$60 per child per month to use through Amazon Business.



Packed Promise

NOW ACCEPTING APPLICATIONS

Eligibility:
Packed Promise is a store-to-door food delivery service available to Chickasaw students pre-K through grade 12. Participants must qualify for free or reduced-cost school meals and reside within the Chickasaw Nation boundaries or one of the newly extended following counties:

- Atoka
- Caddo
- Canadian
- Cleveland
- Comanche
- Cotton
- Hughes
- Pittsburg
- Pottawatomie
- Seminole

Food Delivery:
Packed Promise provides one box of food each month per eligible child in the household. Each box contains:

- ~25 pounds of shelf-stable foods
- \$15 EBT card to buy fresh/frozen fruits and vegetables at Chickasaw Nation WIC grocery stores or farmers' markets
- Nutrition education

Apply online at PackedPromise.com
or call (844) 230-3785.



the
Chickasaw Nation

How CCAM HELP?

Example: Feeding America Eastern Wisconsin & Great Lakes Intertribal Food Coalition (GLIFC) PARTNERSHIP

"The Tribal Elder Food Box program is a prime example of innovation and community engagement that addresses hunger and food insecurity for some of the most vulnerable tribal citizens in Wisconsin. This project incorporates a model of collaboration and coordination with the other food banks and local tribal community leaders which promotes shared power and ownership with the Native Nations in the state. Other food banks from around the nation are looking to the Tribal Elder Food Box program as a model for building stronger partnerships with the tribes and Native communities they serve."

 Mark Ford, Director of Native and Tribal Partnerships, Feeding America



The Wisconsin Department of Transportation (WisDOT), in collaboration with the Tribal Aging Units, developed an 85.215 Grant Application.

Thursday Transit Track Session – Funding

Transit

Tribal Funding Roundtable and Interactive Breakout Sessions

🕒 11:00 AM - 12:30 PM 📍 Red Bud

Tribal Funding (5310 and other) Roundtable/Interactive Breakout Sessions – Agenda

- *Session Opening – **Carrie Diamond, Co-Director, NADTC***
- *Panel Conversation – **Comanche Nation – Zoom if possible/Muscogee Nation/Chickasaw Nation/Cherokee Nation – Moderated by Enjoli Dixon, NADTC/NCMM and Olivia Hook, ODOT, Mobility Management***
- *More Funding available for Tribal Nations – FTA- 5310, and more –**Jeremy Bell, Mississippi Choctaw / Tribal/Non-tribal transportation services in communities- MSDOT Regional Dialogues example & Central MS services –Support for Tribal Nations – [Executive Order 14112](#) presentation - USDOT – Office of Tribal Affairs, Milo Booth***
- *Interactive Strategy Sessions – Breakouts into Groups: Strategy & Goal planning session – **Facilitated per the FTA centers and Oklahoma Mobility Manager***

Activity Time!!!!



Image by Vistage Worldwide

**Thank You!!!
Let's work together in
harmony to improve
transportation for all!!**

