



---

# GIS - A POWERFUL TOOL FOR EFFECTIVE TRANSPORTATION PROGRAM MANAGEMENT

---

**UNDERSTANDING THE CAPACITIES OF GIS IN TRIBAL  
TRANSPORTATION PLANNING AND BEYOND**

---

*“Without data, you’re just another person with an opinion.”*

- W. Edward Deming,  
Data Scientist

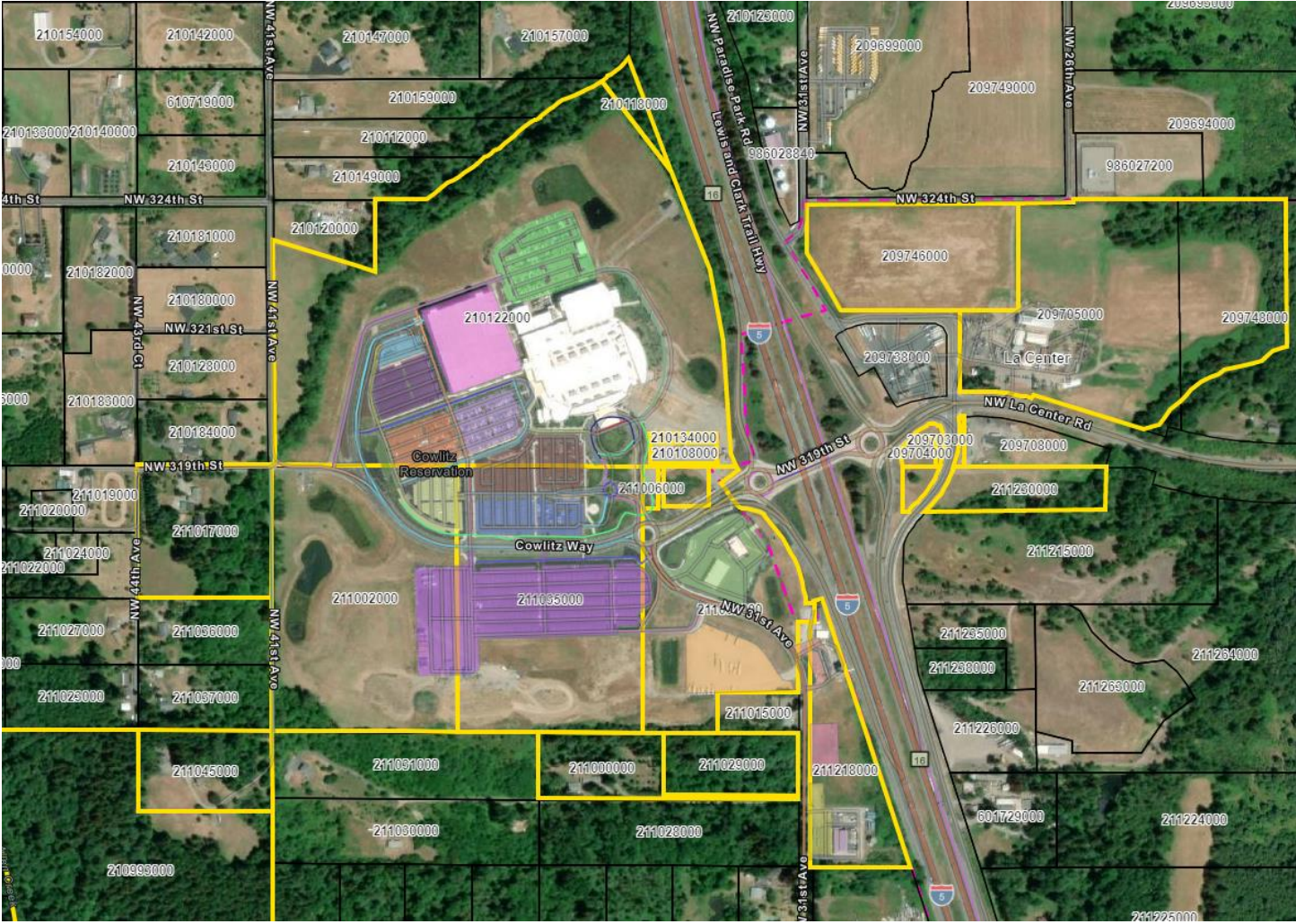
# GIS Asset Management for Tribal Transportation Planning

---

## Introduction

- GIS is not coming, it is here.
- Are you Ready for GeoRIFDS?
- What is Asset Management?
- How can a GIS based Asset Management System be utilized to improve your Tribal Transportation planning efforts?
- How can GIS be utilized to manage planning efforts throughout all Tribal departments?
- Real World Examples of GIS tools:
  - Paskenta Band of Nomlaki Indians, Corning, CA
  - Zuni Pueblo, Zuni, NM
  - Shoalwater Bay Indian Tribe, Tokeland, WA
- Q & A

# What is GIS?



- A Geographic Information System (GIS) is a computer based system that captures, manages, analyzes, and represents all types of data related to positions on Earth's surface.
- With a unique capability to analyze and integrate many types of data, GIS is a powerful tool for making sense of complex data in a spatial context, allowing for more effective planning and decision making.

# What is Transportation Asset Management?

---

## Transportation Asset Management (TAM)-

- a strategic and systematic process of operating, maintaining, upgrading, and expanding physical assets effectively throughout their life cycle.
  - focuses on planning and engineering practices for resource allocation and utilization, with the objective of better decision making based on quality information and well-defined objectives.
- *Currently, your Tribal transportation facility records in the Road Inventory Field Data System (RIFDS) are managed as tabular data in an Oracle database.*
  - *The data can be accessed in formats such as reports, tables, and PDF versions of documents that were provided to support the addition of facilities into your Tribe's NTTFI and Long Range Transportation Planning. The documents have no spatial relation to the facilities they reference.*
  - *This is changing – GeoRIFDS is coming and GIS is the backbone of the new system.*

# Benefits of a GIS Asset Management System

## What are some specific benefits of having a GIS based AMS?

- **Better data management – all your data localized in one very functional format.**
- **More effective planning - show all assets and how they relate to one another to broaden your view and understanding of what's really going on with your assets.**
- **Improved efficiency – By using GIS to map and track assets, managers/planners can easily locate and manage assets, saving time and reducing costs associated with upgrades, maintenance, and repair.**
- **Improved communication – GIS tools allow you to “Tell the Story” in a user friendly visual format supplemented with documents.**

### Tribal Council

- Can make well-informed decisions
- Can present well-supported documentation in support of Tribal Projects and Needs

### Transportation Department

- Can manage future updates and analysis easier
- Can efficiently implement TTIP
- Can effectively represent their issues to leadership and outside entities

### Grant Writers

- Can use the report findings and cost estimates to seek out additional funding and easily produce grant from well-organized data

### Other Tribal Departments

- Can coordinate their project with your projects effectively
- Can potentially utilize multiple funding sources for related projects

### BIA/FHWA

- Can more easily represent your needs in Washington DC to increase TTP funding levels
- Can bring your projects forward for special consideration and funding

### MPOs and RTPOs

- Are aware of your project needs and may provide supplemental/support funding and coordination

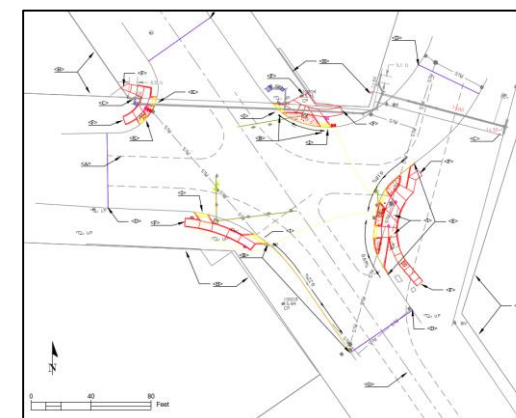
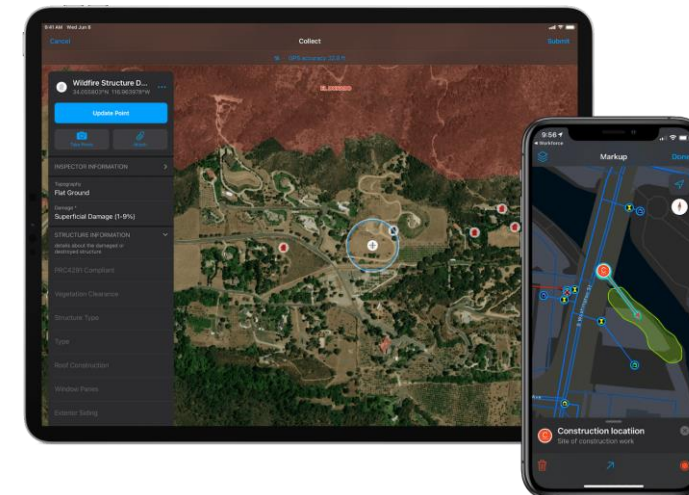
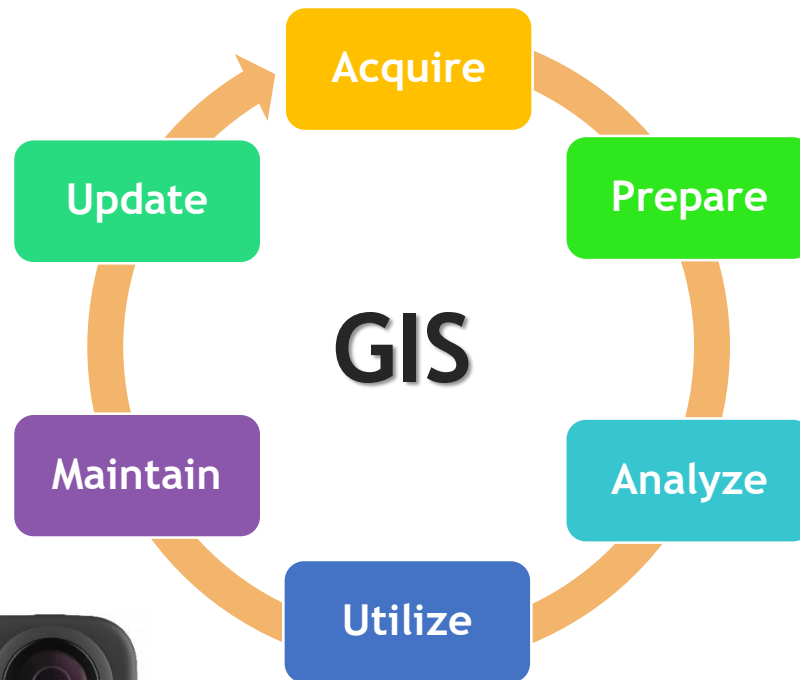
### City, County, State DOTs

- Are aware of your project needs and may provide supplemental/support funding and coordination

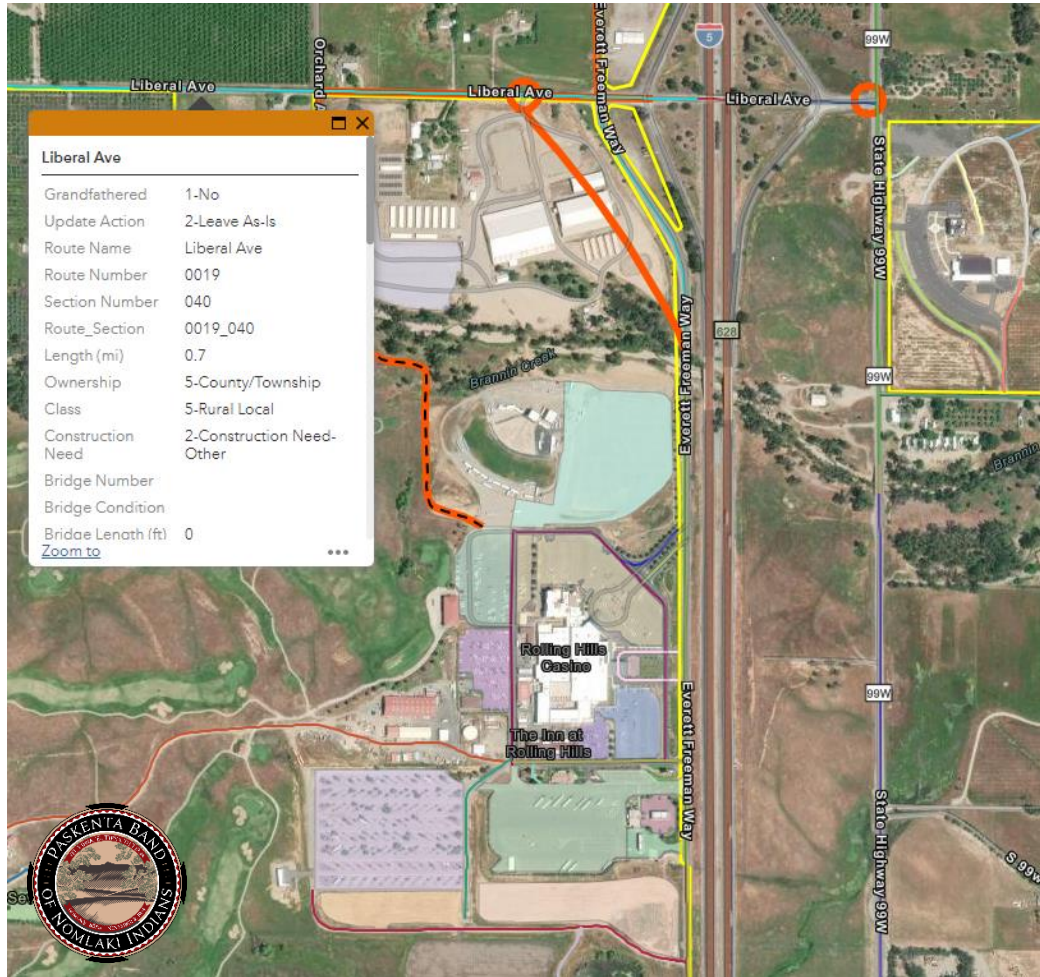
# Data Collection/Creation

“Garbage in, garbage out”

GIS based tools allow for more accurate data to be collected, whether in the initial collection, during the update process, compiling maintenance needs and tracking the work done, on through to future planning efforts.



# TTP Management



2024 TRIBAL TRANSPORTATION PROGRAM  
LONG RANGE TRANSPORTATION PLAN  
& NATIONAL TRIBAL TRANSPORTATION FACILITY  
INVENTORY UPDATE

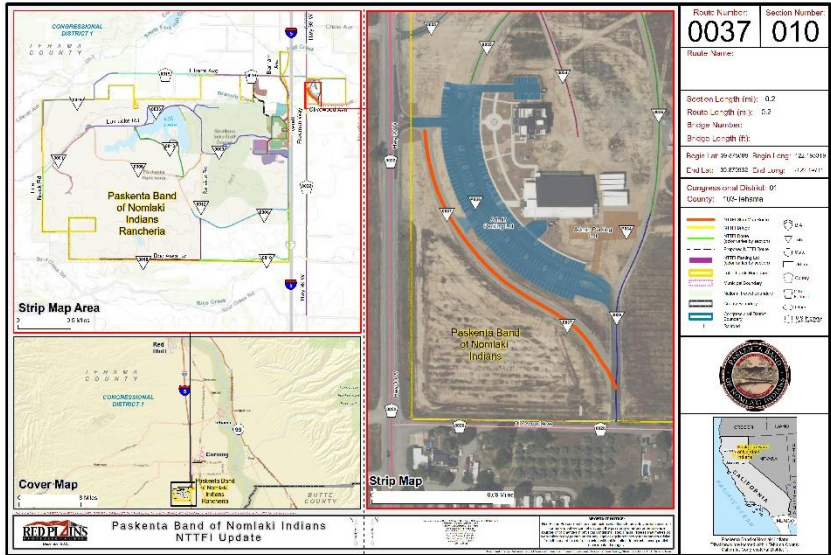
Paskenta Band of Nomlaki Indians  
Pacific Regional Office - Bureau of Indian Affairs

Prepared by:  
**RED PLAINS**  
2024

Paskenta Band of Nomlaki Indians  
2024 NTTFI Inventory Update  
5704 Report

Route Name:	Admin Parking Lot
Route Number:	P034
Section Number:	010
State:	06-California
Ownership:	2-Tribe
Federal Aid Category:	1-Local Roads
Class:	9-Other Trans Fac
Terrain:	
Construction Need:	2-Construction Need-Other
Surface Type:	5-Bituminous>2"
Shoulder Type:	
Length of Section (mi):	0.1
Surface Width (ft):	78
Shoulder Width (ft):	
Bridge Number:	
Bridge Condition:	
Bridge Length (ft):	
SGI:	
Roadbed Condition:	4-Optimum(80-100%)
ROW Status:	1-Tribal Resolution/Consent
ROW Width (ft):	
County:	103-Tehama
Congressional District:	01
Drainage Condition:	3-Excellent Drainage
Shoulder Condition:	
Routes Only:	
Begin Latitude:	
Begin Longitude:	
End Latitude:	
End Longitude:	
Parking Lots Only:	
Center Latitude:	36.879216
Center Longitude:	-122.195100
Parking Area (sq ft):	11,689

Prepared by: **RED PLAINS** Date: 11/06/24 Page: 010 of 010





# Maintenance Plans



## Shoalwater Bay Indian Tribe 2024 Maintenance Plan

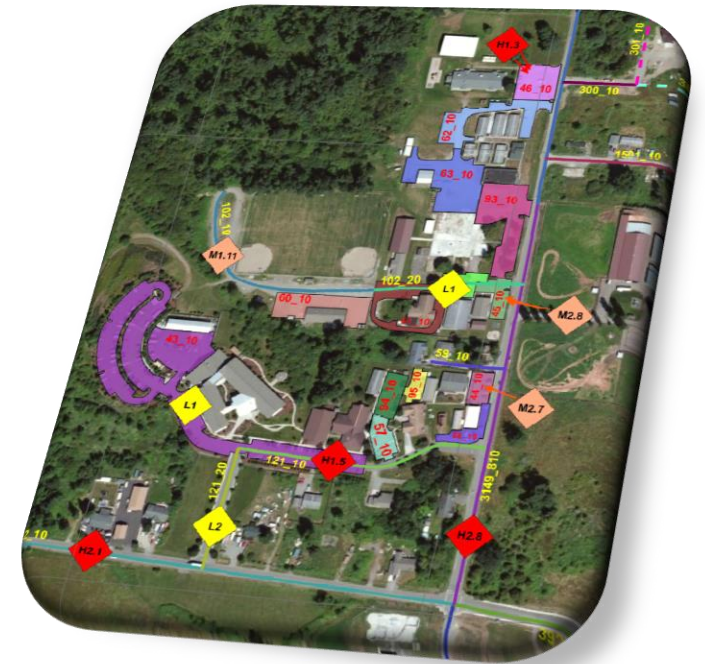


Route Name: Shoalwater Bay Dr  
 Route Number: 0001  
 Section Number: 010  
 Maintenance Need 1: 15-Crack Seal  
 Maintenance Priority 1: 2-Medium  
 Maintenance Need 2: 3-Chip Seal  
 Maintenance Priority 2: 1-High  
 Maintenance Need 3:  
 Maintenance Priority 3:  
 Maintenance Need 4:  
 Maintenance Priority 4:  
 Comment: A few cracks. No Drainage.



Date: 8/22/2024

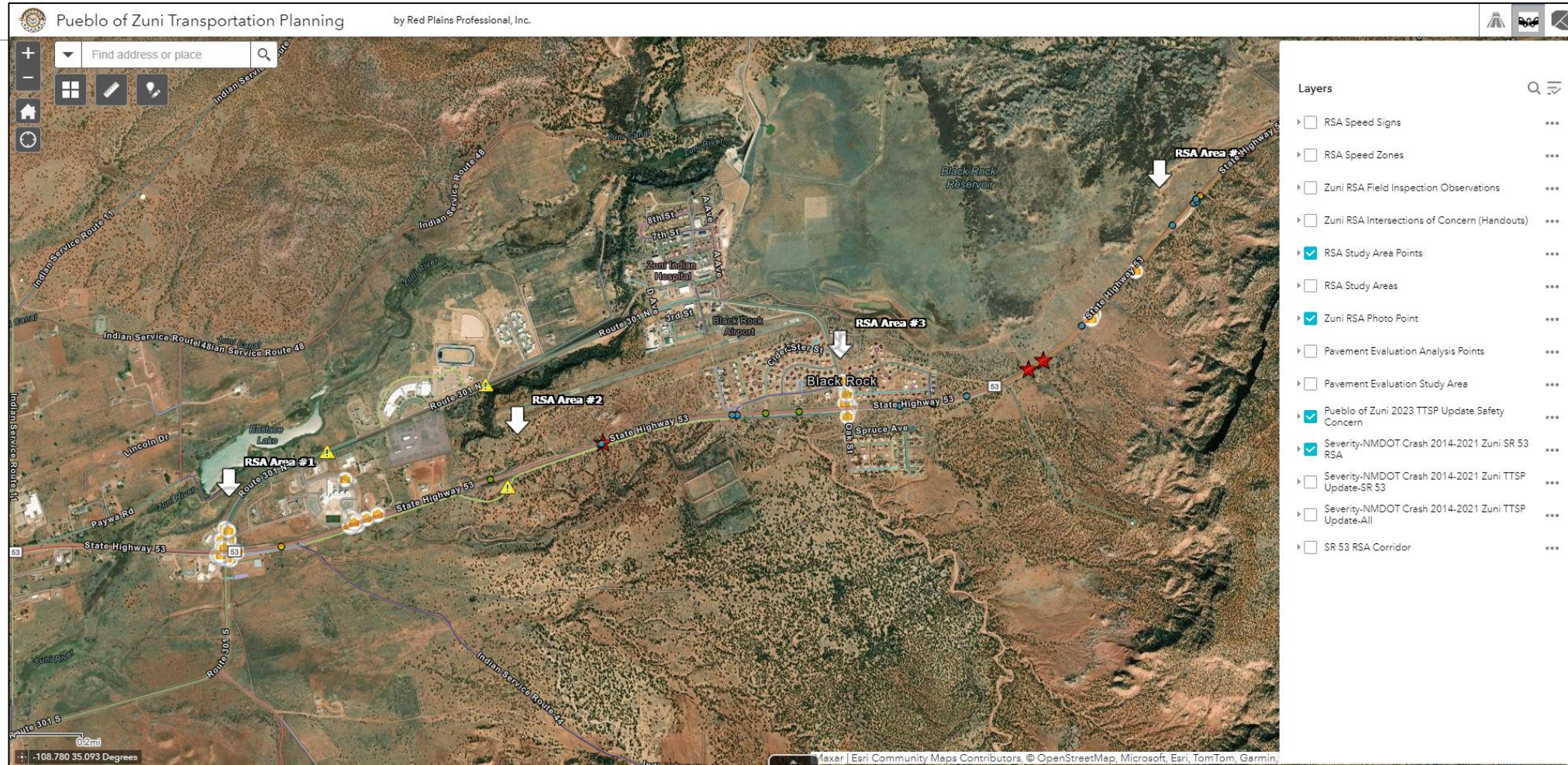
0001\_010



# Safety Plans/RSAs

**“The TTPSF emphasizes the development of strategic Transportation Safety Plans using a data-driven process as a means for Tribes to determine how transportation safety needs will be addressed in Tribal communities.”**

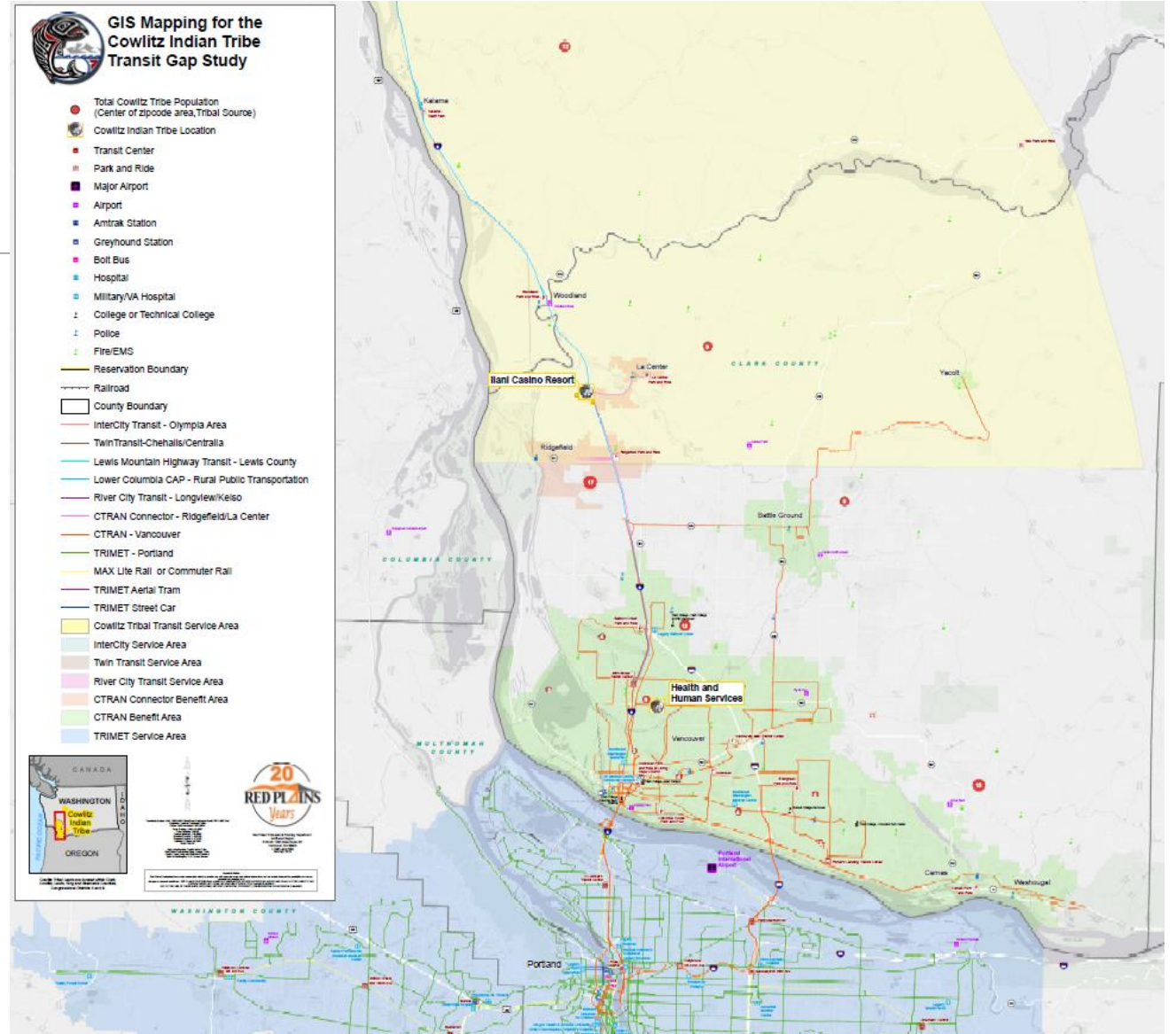
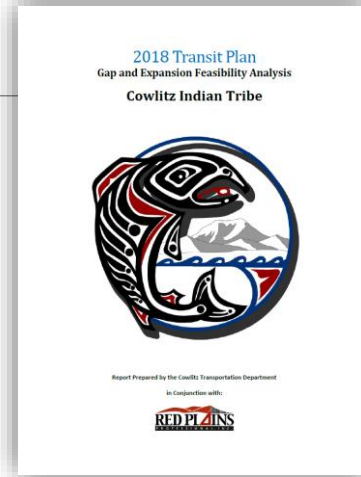
-Notice of Funding Opportunity for Tribal Transportation Program Safety Funds, Federal Register - 09/21/2017



# Transit Studies Transit Plans

## Transit Related Uses:

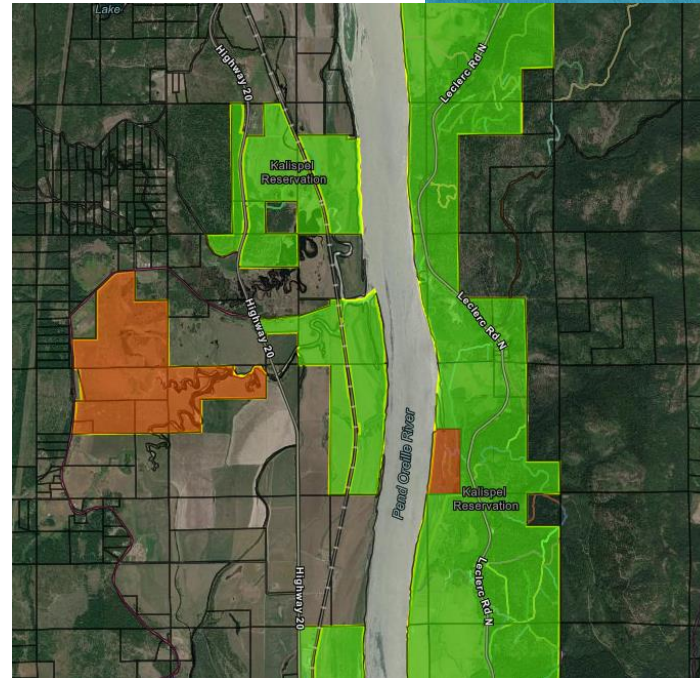
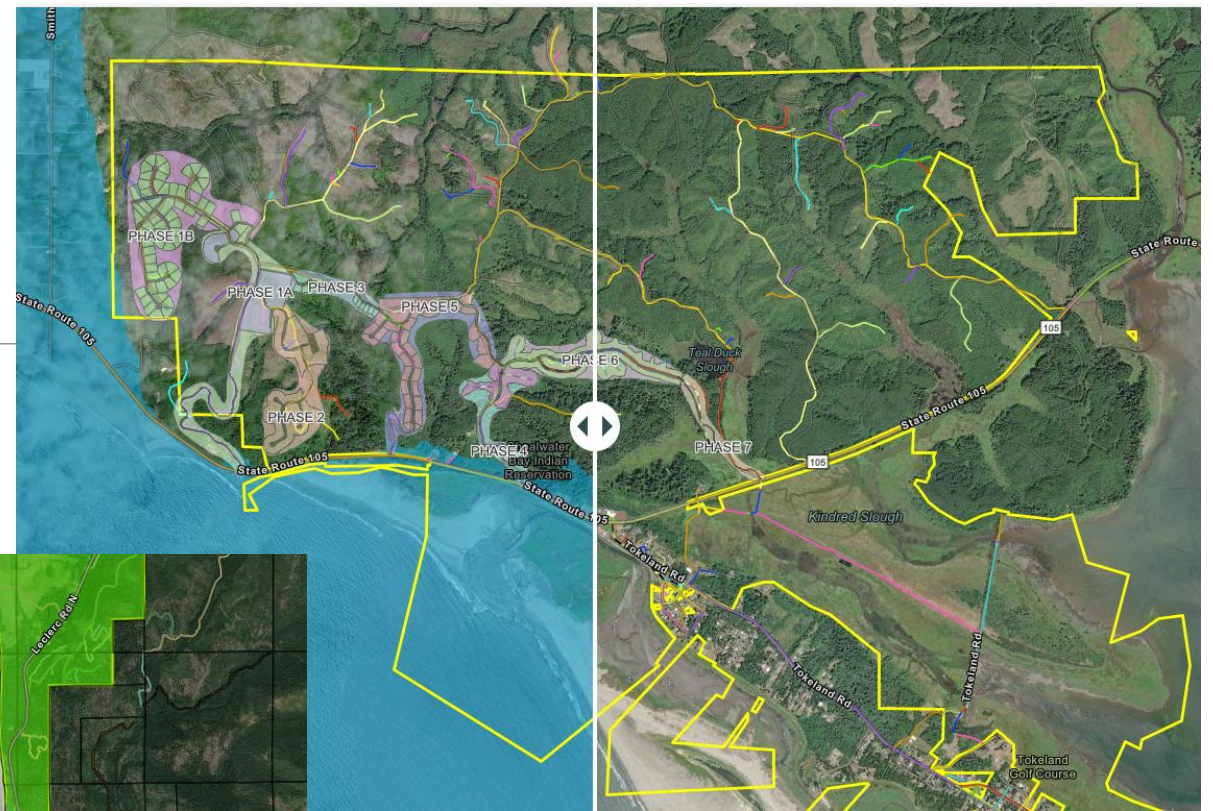
- *Transit Plans*
- *Gap Studies*
- *Expansion Studies*
- *Feasibility Studies*



# Land Use Planning and Development

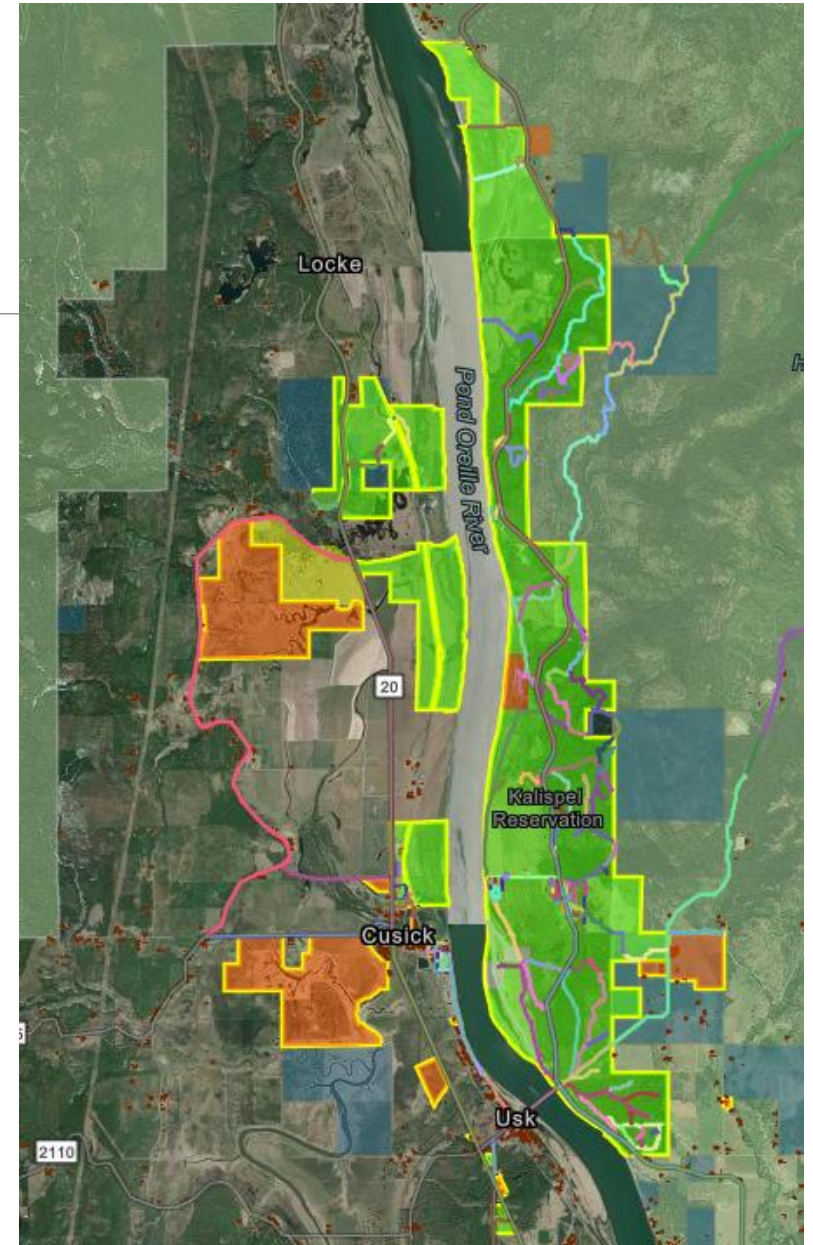
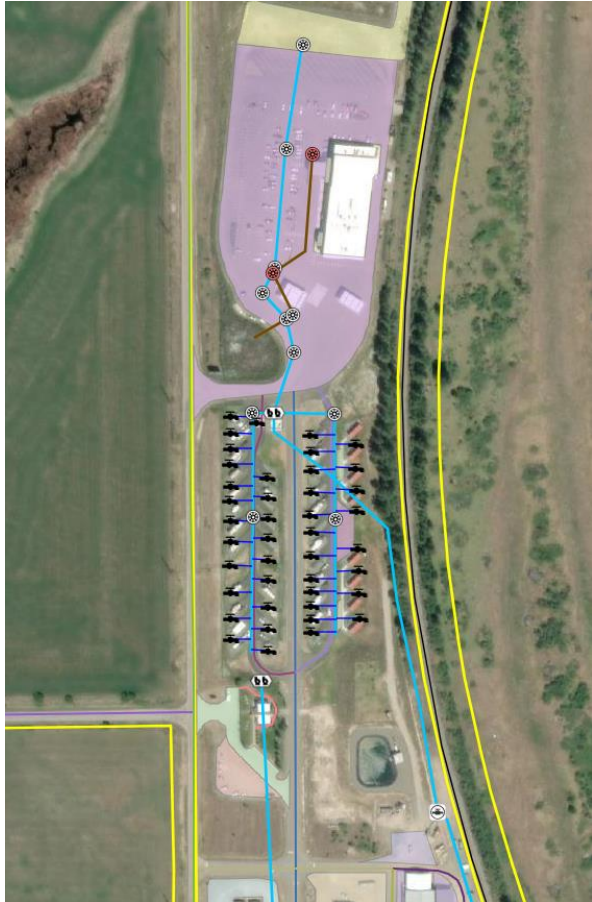
## Feasibility Planning:

- Future Land Use/Long Term Planning
- Topographical Surveys
- Cultural/Historical Resources
- Geotechnical Investigations
- NEPA – EIS/EA/CatEx
- Wetlands Surveys
- Parcel Data/Land Ownerships

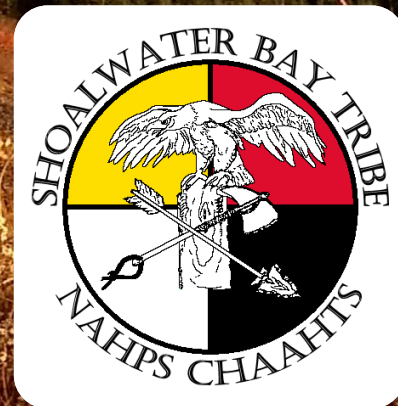


# Asset Management Systems

Transportation, Utilities, Facilities, Land Management...?



Thank you to our Tribal Partners  
for allowing us to share these projects.



# Web Applications

---

<https://red-plains.xyz/SBITStory>

<https://red-plains.xyz/PuebloofZuniTransportationPlanning>

<https://red-plains.xyz/PaskentaBandofNomlakiIndian>

Login: redplainsguest

Password: !RedplainsGIS24\$



Presenter Contact Information:



**Ken Picard**

Assistant Planning Director

2103 NE 129th Street  
Suite 201  
Vancouver, WA 98686-3271  
Fax: 360.258.0274

ken.picard@red-plains.com  
www.red-plains.com  
Office: 360.448.7999  
Cell: 360.600.5164

**Thank you for your time and  
interest in understanding how to  
utilize GIS in your Tribal  
Transportation Program!**

# **GIS - A POWERFUL TOOL FOR EFFECTIVE TRANSPORTATION PROGRAM MANAGEMENT**

**UNDERSTANDING THE CAPACITIES OF GIS IN TRIBAL  
TRANSPORTATION PLANNING AND BEYOND**

